

No. 636,077.

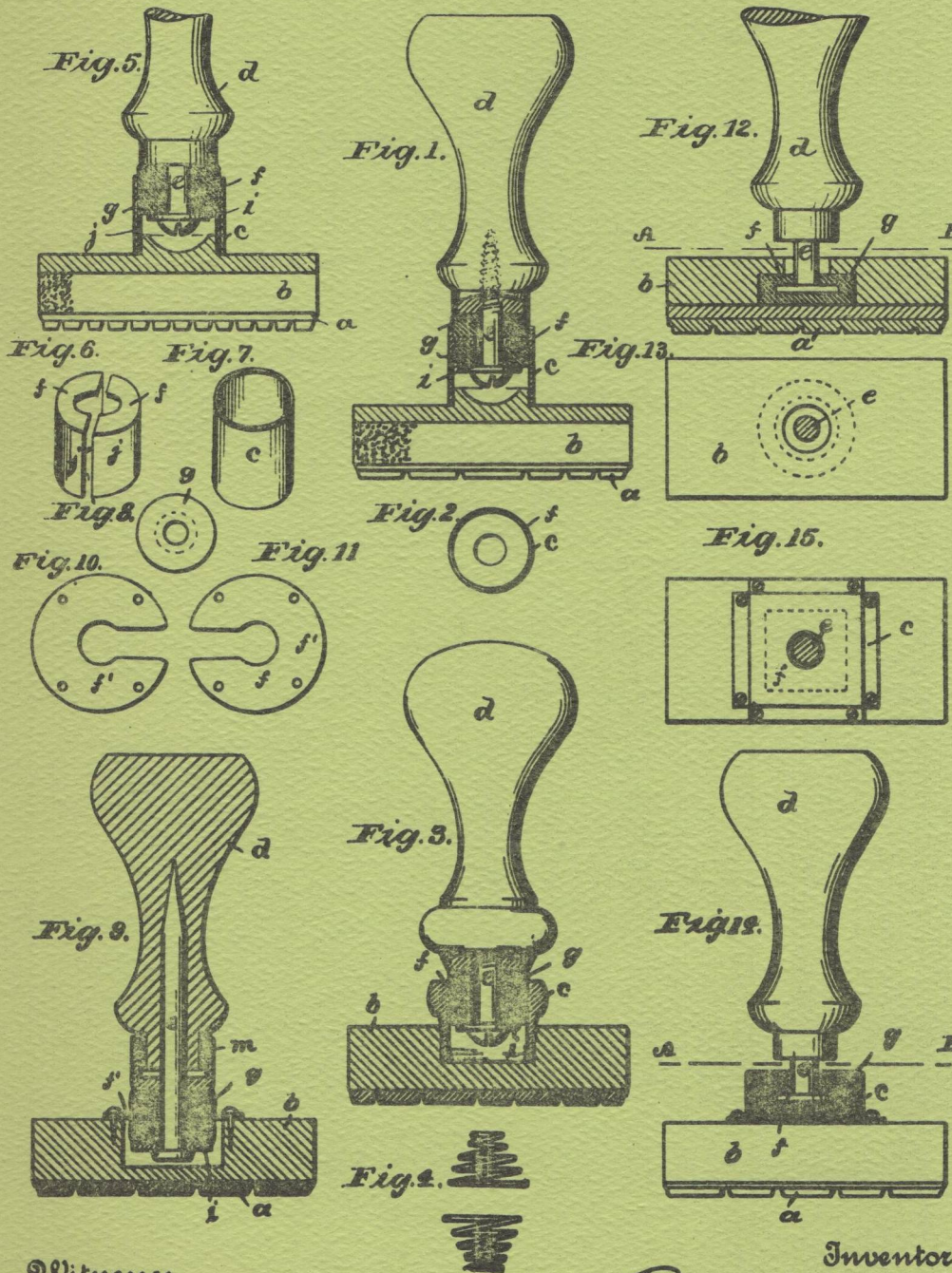
Patented Oct. 31, 1899.

R. H. SMITH.
HAND STAMP.

(Application filed Mar. 15, 1898.)

(No Model.)

L
A
P
O
S
T
A



Witnesses
C. M. Newman
J. R. Kendall

Inventor
Richard Hale Smith

VOL. XIII, NO. 6



LA POSTA

A JOURNAL OF WESTERN POSTAL HISTORY

DECEMBER 1982
VOLUME 13, NO. 6
WHOLE NO. 78

SUSTAINING SUBSCRIBERS

Thomas J. Alexander
Velma Bailey
Alexander Balough
Bancroft Library
William H. Bauer
Gordon Bleuler
Andrew Buckland
Anna Bushue
Richard H. Byne
George Cheren
Giles R. Cokelet
Robert W. Collins
Rod Crossley
Ora B. Dickerson
Sheldon H. Dike
Robert P. Doddridge
Ruth Dolezal
Frederick L. Dunn
Raymond Epple
Charles G. Finke
Inez C. Ford
Kenton Forrest
E. B. T. Glass
Bernard Griffin
Richard B. Hallick
Wm. P. Hoffman
Ed Hyers

James R. Hopkins
Jacque Houser
David L. Jarrett
James T. R. Johnson
Frank J. Kosik
Owen H. Kriege
Richard Lis
Dick Long
Dennis J. Lutz
Howard A. Mader
Leonard McCabe
Wallace G. McDonald
William T. McGreer
Daniel Y. Meschter
Robert F. Miller
Richard L. Morris
C. R. Moyer
Charles F. Nettleship, Jr.
Frank B. Norris
Alan H. Patera
N. Leonard Persson
A. Delbert Peterson
E. S. Peyton
L. Gene Phillips
Robert Potts
James H. Raley
David A. Ramstead

William F. Rapp, Jr.
Joseph F. Rorke
Arthur E. Rupert
Fred A. Scheuer
Neil C. Schroeder
Fred F. Seifert
Daniel R. Seigle
Wade W. Shipley
Donald T. Smith
Henry M. Spelman, III
Joseph V. Stewart
Jack E. Stucky
Ted Teichgraber
Glenn F. Terry
Charles L. Towle
Mort D. Turner
Gordon Twedt
Kenneth L. White
Western Postal History Museum
William H. White
Charles A. Whittlesey
Milton G. Wicker
John H. Willard
John H. Williams
Kirk Wolford
Vern Youngman

IN THIS ISSUE

	Page
POST OFFICES OF KLICKITAT COUNTY, WASHINGTON	
By Tim Boardman	2
THE POST OFFICES OF SOUTHEAST ALASKA (D thru G)	
By Richard W. Helbock	7
NINETEENTH CENTURY OREGON POSTMARKS: BENTON COUNTY	
By Charles A. Whittlesey	11
RECENT BOOKS OF INTEREST	17
THE POST OFFICES OF UTAH: Part XIV, Washington County	
By Dan Meschter with Arthur E. Rupert	19
READERS CORNER	22
EDITOR'S COMMENTS	24

LA POSTA is published bi-monthly with six numbers per volume appearing in February, April, June, August, October and December. The purpose of the journal is to improve the opportunities for publication of research in Western Postal History. Advertising copy deadline is the 15th of each month preceding an issue date. An advertising rate schedule appears elsewhere in this issue. Information regarding subscriptions, back numbers and advertising is available from Editor, LA POSTA, P.O. Box 135, Lake Oswego, OR 97034.

POST OFFICES OF KLICKITAT COUNTY, WASHINGTON

By Tim Boardman

Klickitat County was brought into existence by the act of December 20, 1859. Being carved out of Walla Walla County, it was the 18th county formed by Washington's Territorial government.

Rockland, the first post office, was opened on November 20, 1860, and closed on February 14, 1865. The office received mail through The Dalles, Oregon. Rockland remained the county seat until 1879, even though there had been no formal town on the site since 1865. A vote to change the county seat to Goldendale failed in 1872, despite the fact that the majority of the population was centered around Goldendale. Cattlemen of the county were primarily responsible for that failure. The Rockland office re-opened briefly between May 4, 1882, and August 20, 1883, but generally there was no post office at the site of Rockland until 1892, when Grand Dalles was established on December 28th of that year.

Three years later, Grand Dalles became Granddalles, as Post Office Department dogma began to favor one-word post office names. The old spelling was restored in 1909, and remained unchanged until 1932, when the office was renamed Northdalles. On December 1, 1937, the site of Northdalles was moved approximately one mile north, and the office was renamed Dallesport. This office remains open today.

The second post office in Klickitat County was not established until 1870 -- five years after the Rockland office closed. Klickitat, established July 14, 1870, was a short lived office. John Golden, an early settler in the area, hired a surveyor and had a town platted. Shortly thereafter, Golden purchased the post office building, and, with the consensus of a local gathering, the name of the town was changed to Goldendale.

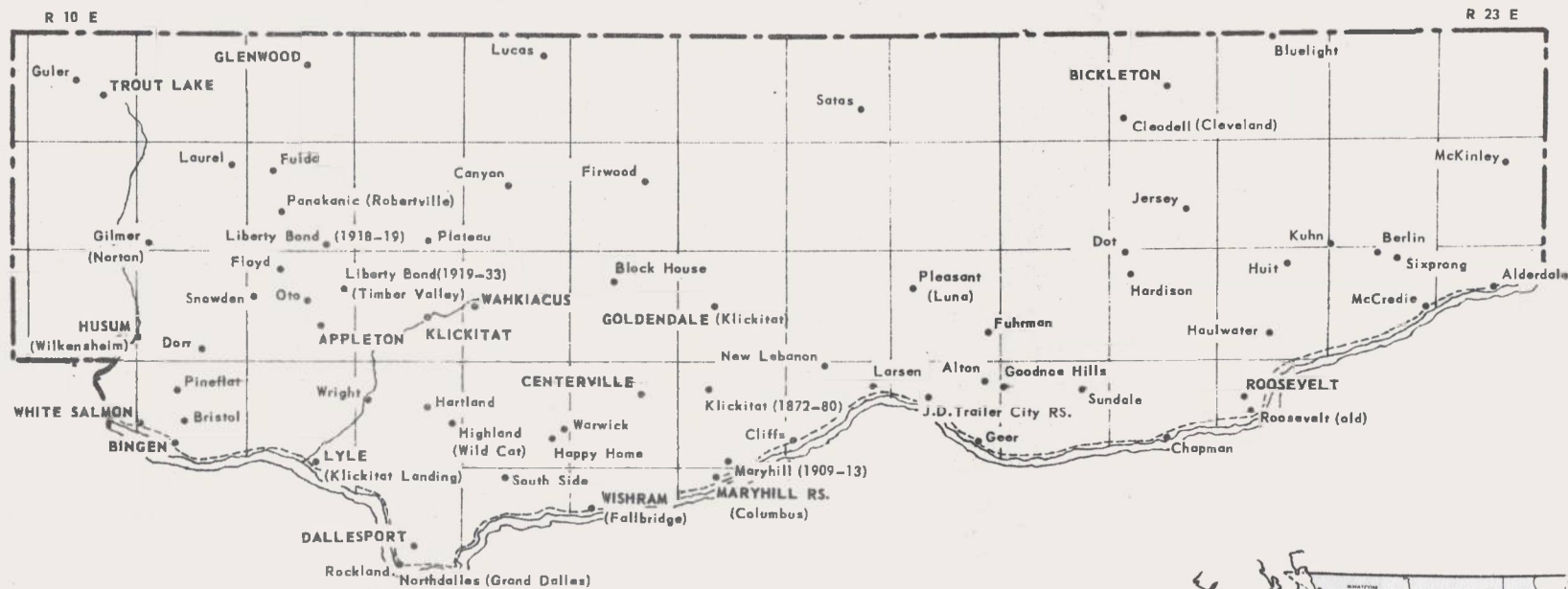
Golden's actions did not please all local residents, and a few disgruntled citizens decided to re-establish Klickitat in May 1872. The office remained open, on and off, until 1880, but it was nothing more than a rural facility operating out of the home of the postmaster. Klickitat post office was generally some five miles south of Goldendale, moving with each new postmaster.

The year 1872 found two other post offices opening: Columbus and Block House. Block House was named after the blockhouse fort built back in the 1850's during local Indian uprisings, and was located seven miles west of Goldendale. Mail was brought from The Dalles along the route to Yakima.

Columbus was located on the Columbia River, approximately 20 miles east of Rockland. The town was never very large, and its destiny was probably changed with the arrival of Sam Hill, railroad magnate. Hill had big plans for the little town. He saw a large, beautiful city situated to overlook the Columbia, and he had plans drawn accordingly. In 1907, Hill tried, unsuccessfully, to have the name of the little town changed to Maryhill. Having failed at this, Hill won approval of a post office located one mile northeast of Columbus in 1909, and named that facility Maryhill. The office closed four years later for lack of patronage. Hill's dream of a large city never came to fruition, but the name Maryhill was finally adopted. It replaced Columbus in 1922. The Maryhill post office remained open until 1963, at which time it was converted to a rural station of Goldendale.

Another early Klickitat County post office was White Salmon. Established on December 12, 1870, this office was originally located one mile west of present-day Bingen. In 1886, when Mrs. Hunsaker became Postmaster, the office was moved to its present location up on the bluffs overlooking the Columbia. At this location, the little town grew to become the county's second largest city. Mail service was originally by way of Hood River, Oregon, across the river, and was tri-weekly. Through the years White Salmon has been a dispatch point for many of the post offices in the western end of the county. In fact, White Salmon has three star routes today. One route goes to the Snowden region. The second and third go through Husum to Troutlake and Glenwood respectively. Since 1894, the majority of offices along these routes have been serviced through White Salmon.

In the 122 years of post office activity, Klickitat County has seen some 83 offices. Of that number only 16 remain open, including the rural station (now Community Post Office) out of Goldendale. Of the 67 discontinued offices (DPOs), 46 (70%) were open for 10 years or less, and 33 (50%) of those



KLICKITAT COUNTY



were active for only five years or less. Consequently, examples of postmarks from many Klickitat offices are quite difficult to find. Even so, the

relative scarcity of these postmarks only adds to the challenge and excitement of collecting the postal history of Klickitat County.

WASHINGTON POST OFFICES Klickitat County

Post Office	Established	Discontinued	Notes
Alderdale	1 Apr 1907	31 Aug 1962	M. to Roosevelt
Alpine	15 Dec 1900	2 Mar 1901	Rescinded
Alton	23 Feb 1900	31 Dec 1902	M. to Goldendale
Appleton	30 Dec 1910	10 Apr 1931	
	12 Oct 1931	Operating	
Berlin	30 Sep 1896	10 May 1898	M. to Bickleton
Bickleton	11 Feb 1880	Operating	
Bingen	4 Jun 1896	Operating	
Block House	22 Apr 1872	4 Aug 1894	NCT: Blockhouse
Blockhouse	4 Aug 1894	30 Sep 1930	M. to Goldendale
Bluelight	1 Mar 1901	17 Oct 1904	In Yakima County
	17 Oct 1904	14 May 1906	M. to Bickleton
Bristol	27 Dec 1906	31 Oct 1912	M. to White Salmon
Canyon	13 Sep 1889	15 Jul 1898	M. to Blockhouse
Centerville	22 Mar 1883	Operating	
Chapman	9 Jul 1881	12 Sep 1881	
Cleodell	7 Feb 1922	30 Jun 1923	M. to Bickleton
Cleveland	7 Feb 1881	15 Oct 1915	M. to Bickleton
Cliffs	30 Sep 1907	31 Mar 1914	
	31 Mar 1917	31 Mar 1950	M. to Maryhill
Columbus	29 Apr 1872	23 Mar 1922	NCT: Maryhill
Dallesport	1 Dec 1937	Operating	
Dorr	8 Jul 1913	14 Sep 1918	M. to White Salmon
Dot	30 Dec 1885	15 Nov 1922	M. to Roosevelt
Fallbridge	9 May 1911	1 Mar 1926	NCT: Wishram
Firwood	13 Apr 1903	15 Nov 1905	M. to Goldendale
Floyd	17 Jun 1905	15 Oct 1907	M. to Timber Valley
Fuhrman	10 Apr 1901	15 Sep 1904	M. to Dot
Fulda	8 Oct 1877	31 Jul 1912	M. to Laurel
Geer	2 Mar 1915	28 Feb 1922	M. to Goodnoe Hills
Gilmer	15 Jun 1883	25 Jul 1895	
	9 Jan 1896	31 Mar 1919	M. to Laurel
Glenwood	9 Mar 1885	Operating	
Goldendale	18 Apr 1872	Operating	
Goodnoe Hills	10 Feb 1909	31 Oct 1958	M. to Roosevelt
Grand Dalles	28 Dec 1892	30 Jul 1895	NCT: Granddalles
	7 Mar 1912	1 May 1932	NCT: Northdalles
Granddalles	30 Jul 1895	7 Mar 1912	NCT: Grand Dalles
Guler	22 May 1903	30 Jun 1936	M. to Troutlake
Happy Home	17 Nov 1879	15 Feb 1884	M. to Centerville
Hardison	15 May 1882	30 Dec 1885	M. to Dot
Hartland	20 Jul 1881	15 Apr 1930	M. to Lyle
Haulwater	12 Jul 1887	29 Jun 1888	M. to Arlington, OR
Highland	20 Oct 1880	11 Apr 1881	NCT: Wild Cat
Huit	13 Apr 1903	31 Dec 1908	M. to Bickleton
Husum	30 Nov 1880	10 Feb 1882	
	19 Sep 1898	20 Oct 1943	
	16 Jan 1947	Operating	

Post Office	Established	Discontinued	Notes
J.D.Trailer City	16 Nov 1962	5 Oct 1966	Rur.Sta. of Gold- endale
Jersey	2 Apr 1901	28 Feb 1907	M. to Cleveland
Klickitat	14 Jul 1870	18 Apr 1872	NCT: Goldendale
Klickitat	20 May 1872	22 Jul 1878	
	2 Aug 1878	20 Oct 1880	
Klickitat	7 Feb 1910	Operating	
Klickitat Landing	5 May 1876	28 Mar 1882	NCT: Lyle
Kuhn	22 Jul 1903	31 Mar 1908	M. to Huit
Larsen	19 Sep 1881	4 Jan 1883	M. to Columbus
Laurel	30 Mar 1905	16 Aug 1974	M. to White Salmon
Liberty Bond	14 Mar 1918	16 Jan 1919	Comb. w/Timber Val.
Liberty Bond	16 Jan 1919	30 Dec 1933	M. to Appleton
Lucas	5 Jul 1900	30 Jun 1930	M. to Goldendale
Luna	18 Apr 1882	3 Oct 1890	NCT: Pleasant
Lyle	28 Mar 1882	Operating	
McCredie	17 Feb 1926	15 Sep 1934	M. to Alderdale
McKinley	16 Mar 1907	31 Oct 1910	M. to Alderdale
Maryhill	18 Jun 1909	30 Sep 1913	M. to Columbus
Maryhill	23 Mar 1922	5 Dec 1963	Conv. to Rur. Sta.
Maryhill Rur. Sta.	5 Dec 1963	Operating	Of Goldendale
New Lebanon	6 Aug 1878	22 Dec 1882	M. to Goldendale
Northdalles	1 May 1932	1 Dec 1937	NCT: Dallesport
Norton	4 Mar 1880	21 Jun 1881	
Oto	6 Aug 1889	18 Aug 1892	M. to Lyle
Panakanic	29 Jan 1912	15 Jan 1919	M. to Dorr
Pineflat	9 Apr 1900	27 Dec 1906	NCT: Bristol
Plateau	13 Jul 1908	15 Jul 1911	M. to Timber Valley
Pleasant	3 Oct 1890	15 Sep 1904	M. to Goldendale
Robertville	8 May 1906	29 Jan 1912	NCT: Panakanic
Rockland	20 Nov 1860	14 Feb 1865	
	4 May 1882	20 Aug 1883	M. to The Dalles,OR
Roosevelt	15 May 1906	Operating	
Satas	2 Feb 1902	31 Oct 1902	M. to Goldendale
Shurtz	19 Jun 1900	9 Feb 1901	Rescinded
Sixprong	1 Sep 1905	14 Oct 1933	M. to Alderdale
Snowden	12 May 1903	30 Nov 1933	M. to White Salmon
South Side	22 Sep 1879	25 Nov 1881	
Sundale	6 Mar 1915	15 Feb 1945	M. to Goodnoe Hills
The Bend	3 Jul 1891	22 Jun 1895	
Timber Valley	17 Jan 1905	16 Jan 1919	NCT: Liberty Bond
Trout Lake	10 Aug 1887	30 Jul 1895	NCT: Troutlake
	1 Nov 1953	Operating	
Troutlake	30 Jul 1895	1 Nov 1953	NCT: Trout Lake
Wahkiacus	23 Aug 1911	Operating	
Warwick	21 Mar 1904	1 Jun 1906	M. to Centerville
White Salmon	12 Dec 1870	Operating	
Wild Cat	11 Apr 1881	20 Jul 1881	NCT: Hartland
Wilkinsheim	8 Mar 1880	3 Aug 1880	
	23 Aug 1880	30 Nov 1880	NCT: Husum
Wishram	3 Mar 1926	Operating	
Wright	31 Mar 1904	7 Feb 1910	NCT: Klickitat

A L A S K A

LARGE STOCK. SEND NO. 10 SASE FOR PARTIAL LIST OR SEND YOUR WANTLIST OF COVERS AND TOWNS.

STEVE SIMS, 1769 WICKERSHAM DR., ANCHORAGE, AK 99507

CALIFORNIA DPOS, RPOS,

PLUS SOME OTHER STATES OF THE WEST.
NET PRICE SALE; LISTING FOR S.A.S.E.
TOM EDISON,
BOX 246, HAYWARD, CALIFORNIA 94543

Chas. A. Whittlesey Mail Auction No.1

6531 SE Iwon St.
Portland, OR
97206

ALASKA

1. ROTZEBUE, 1937, Ty 4 VF on cvr w/Mission cc. E.\$5
2. LAWING, 1936, Ty 2 EXC 4-bar on clean cvr. E. \$15

ARIZONA

3. GARDEN CANYON & FRY, 1937, LDC & FDC on UX27.E.\$5
4. PLENTY, 1937, LDC on UX27. Est. \$5.00
5. SOMBRERO BUTTE, 1940, phil. Pony Exp. to Copper Creek b/s. Both DPOs. Est. \$5.00

COLORADO

6. AMITY, 1937, light MOB dc on phil. UX27. Est. \$3
7. CRYSTAL PARK, 1913, VF cds on PPC w/COLORADO SPRS postmark. PPC shows bus to resort. Est. \$3.00
8. FLOYD HILL, 1937, VF 4-bar on UX27. LDC. E. \$5.00
9. KEOTA, 1947, VF 4-bar on comm. cvr. E. \$2.00
10. PENEOLD & GOULD, 1937, LDC & FDC on philatelic UX27. PENEOLD only in 3 months! Est. \$10.00
11. SAN ISABEL, 1938, F-VF 4-bar on UX27. E. \$5.00
12. RIVER BEND, 1937, VF 4-bar on VF phil cvr. E. \$5
13. SKULL CREEK, 1937, VF 4-bar on UX27. E. \$3.00

DAKOTAS, NORTH & SOUTH

14. SILVERLEAF, ND, 1938, LDC on UX27. E. \$3.00
15. BEARDSLEY, S.DAK, 1936, EXC blue 4-bar on cvr.E.\$3
16. CARLOCK, S.DAK, 1937, VF red LDC on UX27. Est. \$3
17. GLENLEVIT, S.DAK, 1937, F-VF 4-bar on UX27.LDC.E\$3

IDAHO

18. CHURCHILL, 1936, VF 4-bar on phil. cvr. Est. \$4
19. PINE, 1946, VF 4-bar on UX27 (1887-1955). E. \$3
20. SOLDIER, 1907, VF 4-bar on PPC (1882-1919) E.\$5.00
21. SUMMIT, 1912, VF 4-bar on PPC (1900-34) Est. \$5.00
22. TAMARACK, 1945m VF 4-bar on UX27 (1911-59). E. \$4

MONTANA

23. BISON, 1936, VF 4-bar on cvr.(1918-36).LDC E. \$3
24. CRISWELL & ROCKCREEK, 1937, FDC & LDC on clean phil. cvr. CRISWELL in only 10 mos. Est. \$10.00
25. ESKAY, 1936, VF 4-bar on cvr.(1917-36).LDC. E. \$3
26. GRISDELLA, 1937, VF 4-bar on LDC (1927-37). E. \$5
27. MASCHETAR, 1937, VF 4-bar on LDC (1915-37). E. \$3
28. MINK, 1936, F-VF red 4-bar on cvr.(1915-36) E. \$3
29. MOLT, 1936, VF 4-bar on cvr. Est. \$2.00
30. PAXTON, 1938, VF LDC on UX27 (1909-38). Est. \$3.00

OKLAHOMA

31. LONG, 1937, VF 4-bar LDC on UX27. Est. \$3.00
32. NEODESHA, 1937, VF 4-bar LDC on UX27. Est. \$3.00
33. OBERLIN, 1937, VF 4-bar LDC on UX27. Est. \$3.00
34. PHROSO, 1937, VF 4-bar LDC on UX27. Est. \$3.00
35. REDLAND, 1937, VF 4-bar LDC on UX27. Est. \$3.00

OREGON

36. DILLARD, 1907, EXC Ty 1 Doane on PPC. Est. \$3.00
37. EMPIRE CITY, ca.1868, decipherable cds on small cvr. w/torn #68. mss "by steamer" to Maine. E. \$8
38. GILLTON, 1894, EXC cds on U349 tragically defaced by 2-sq. inch cut out in center. 5-year PO. E. \$5
39. HOT LAKE, 1923, F-VF 4-bar on cvr. roughly opened at rt. not harming 26 red. Est. \$3.00
40. INDEPENDENCE, 1938, Flag canc. on commem. flight cvr. Attractive philatelic item. Est. \$2.00
41. LAKEVIEW, 1907, VF Doane Ty 3 w/#14 (unlisted)E.\$3
42. LYONS, 1907, EXC Doane TY 2 on PPC. Est. \$2
43. PORTLAND, 1887, illus. CHAS DODD agric. implemnt. cvr. shows stag leaping. Est. \$5.00
44. PORTLAND, 1880, fancy NEWBURY, HAWTHORNE & CO. ag. implemnt. cvr. w/illus. encl. Est. \$7.50
45. PORTLAND, 1905, LEWIS & CLARK color ad. cvr. w/Portland slogan canc. Env. slit open. Est. \$7.50
46. JANTZEN BEACH RUR. STA., 1947, on Rose Fest. souv. envelope. Est. \$4.00
47. SAINT PAUL, 1884, VF cds on clean U331. Est. \$10.
48. WILLOWDALE, 1932, F-VF 4-bar on U429.(1928-37)E.\$5

WASHINGTON

49. ECHO, 1908, VF 4-bar on PPC (1903-15). Est. \$10.00
50. ELGIN, 1936, VF 4-bar on LDC (1892-1936) E. \$3.00
51. GODFREY, 1908, VF Doane Ty 3 as rcv mk on PPC. A scarce PO (1905-12). Est. \$5.00
52. NEW KAMILCHE, 1908, VF cds on PPC. Est. \$5.00

WASHINGTON (continued)

53. NEW WHATCOM, 1892, VF cds on UX9.(1891-1901).E.\$8.
54. PEOLA, 1910, VF 4-bar on PPC (1880-1935). Est. \$5.
55. SUMNER, 1911, VF Flag Hndstmp. on PPC. Est. \$4.00
56. WINDOM, 1909, F-VF Doane Ty 2 as rcv. mk. on rev. of UX19. Lewis Co. (1891-1909). Est. \$3.00

WYOMING

57. BOXELDER, 1943, VF 4-bar LDC on soiled UX27. E. \$3
58. DINES, 1955, VF 4-bar LDC on UX38. Est. \$2.50
59. DULL CENTER, 1954, VF 4-bar LDC on UX38. Est. \$3
60. HELLS HALF ACRE, 1955, VF 4-bar on UX38. Est. \$2
61. LARAMIE CITY, 1886, VF cds on U277 a bit rough at rt., but not into stamp. Est. \$8.00.
62. LITTLE BEAR, 1955, VF 4-bar LDC on UX38. Est. \$3
63. HOLM LODGE & PAHASKA, 1950, LDC & FDC on cvr. E.\$4
64. ROCK SPRINGS, 1887, F-VF cds & star-in-circle on U277. b/s fancy VOLGA/Clayton Co. Iowa. Est. \$10.
65. ROSS, 1955, VF 4-bar LDC on UX38. Est. \$3.00
66. ROXON, 1936, VF 4-bar LDC on clean cvr. Est. \$5.
67. SODA WELL, 1937, F-VF 4-bar LDC on cvr. (1931-37) Est. \$8.00
68. WINTON, 1955, VF 4-bar LDC on UX38. Est. \$3.00

RAILWAY POST OFFICES (Towle Cat. Nos.)

69. ALBUQUERQUE & ASHFORK (964-D-1) VF on PPC. E.\$4.
70. BELL & ANACORTES (W-58-unl.) F-VF Puget Sound steamboat marking on PPC. 1908. Est. \$10.00
71. BILLINGS & SHELBY/I.R.COPE, 1917, VF agnt. mark on Reg. Pk. Rct. Est. \$10.00
72. BILLINGS & VIRDEN, 1912, VF (891.5-D-1) on Reg. Pk. Rct. Est. \$10.00
73. BRECK & ABERDEEN, 1932 (878.3-A-?) VF on cvr.E\$5.
74. EUGENE & POWERS,1944 (900.2-B-2) VF on cvr.E. \$5.
75. HAVRE & SPOK.,1905 (869-V-1) VF on PPC. Est. \$5.
76. LEWISTOWN & GREAT FALLS,1913, EXC dbl circ. red violet agnt mrk on Reg. Pk. Rct. Est. \$15.00
77. LEWISTOWN & GREAT FALLS,1913, EXC st. line agent marking on Reg. Pk. Rct. Est. \$20.00
78. MARCUS & SPOKANE,1934 (902.1-C-1) F-VF on cvr.E\$8.
79. MARKET ST. & SAN FRAN.,1899 (SF-1-a) VF on stained cvr. stamp replaced. Est. \$15.00 Looks great.
80. OROVILLE & SPOKANE,1920 VF (902.1-F-1) on cvr.E\$5.
81. POCOTELLO & PORT.,1905 VF (898-N-1) on illus. hotel cvr. w/minor tears @ top. Est. \$10.00
82. PORTLAND & BEND,1913 VF (899.1-B-1) on PPC. E. \$5.
83. PORT. & DALLAS,1910, VF (900.5-C-1) on PPC. E. \$5.
84. SEATTLE & HOQUIAM,1911 VF (901.4-E-1) on PPC.E.\$5.
85. SEATTLE & SKAGWAY,1915 VF (X-19-b) on PPC. E. \$8.
86. SPOK. & LEWISTON, 1928,VF (906.4-C-1) on cvr.E.\$5.
87. SPOK.PASCO & PORT.,1910 VF (899.1-C-1) on PPC.E.\$5
88. SPOK. & PENDLETON,1910 VF (896.5-D-1) on OR&N Co. cvr. Est. \$8.00
89. SPOKANE & PORTLAND,1908 VF (904.6-B-1) on cvr.E.\$8
90. SPOKANE & UMATILLA,1907 F (904.6-D-1) on illus. Spokane hotel cvr. Est. \$8.00
91. SPOK. & UMATILLA,1910 VF (904.6-D-7) on OR&N cvr.E\$8
92. SPOK.WASH/TRANS.CL'K,N.P.STA.,1910 VF (906.5-A-4) on PPC. Est. \$8.00
93. STITES & LEWISTON,1912 F (906.4-B-1) on PPC. E. \$8.
94. STITES & LEWISTON,1941 VF(906.4-B-2) on cvr. E. \$5.
95. THE DALLS & BEND,1925 F (896.6-A-1) on PPC. E \$10
96. WALLACE & SPOKANE,1909, F (896.7-A-1) on cvr.E \$8
97. WALLULA & PENDLETON,1910, about Fine light cds on OR&N Co. env., tough RPO. Est. \$15.00

MISCELLANY

98. U.S.POS.SERVICE,SHANGHAI/CHINA, 1919, F-vf duplex ties VF copy of #K2 to cvr. w/encl. Cover has repairable tears at top not into stamp or PM. Est.\$25
99. R.F.D./STRONG/ME.,1906 VF st. lines on PPC. E. \$5.
100. Dedication cvr. 1950, San Fernando Valley Apt.E\$2
101. PORTLAND & CORVALLIS,1949, pair of HPO covers for Trips 1 & 2.,cacheted. Est. \$5 pair.
102. LITTLE AMERICA/ANTARCTICA, 1935, Byrd Ex. cvr.E\$3
104. BUTTE/MONT.,1938, Nat'l Airmail week w/copper cachet on clean cvr. Est. \$3.00
105. U S TICONDEROGA, Apr 27,1972, APOLLO 16 cachet recovery ship. Est. \$3.00

Minimum bid is \$2.00. Improperly described lots are returnable within 10 days for full refund. Lots sold at a slight advance over second high bid. Buyers pay mailing costs.

BIDS CLOSE: January 30, 1983

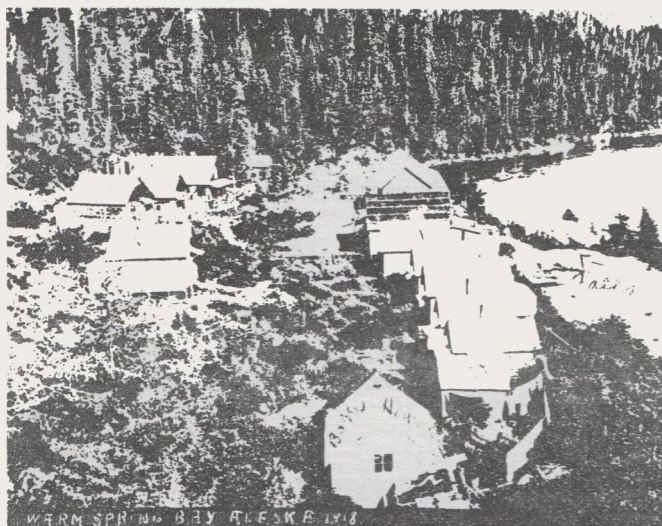
THE POST OFFICES OF SOUTHEAST ALASKA

By Richard W. Helbock

(Continued from LA POSTA, 13/5)

AMALGA (Correction courtesy of Len Persson)

The name is an acronym of sorts. Mrs. Lora Thane Whipple, wife of Amalga's 1st PM and sister of the mine foreman, related that the name was chosen around the supper table one night. "A" was for Alaska, "MAL" for Mallory, and "GA" for Georgia. The mine was owned by a Mr. Mallory of Georgia.



Baranoff, Alaska, in 1918.

DOLOMI

Estab: 30 Jun 1900. Dis. 30 Sep 1926.
MT: Ketchikan.

Served a gold-mining camp at the head of Dolomi Bay on the southeastern coast of Prince of Wales Island. Originally called "Dolomite", due to the common occurrence of this type of rock in the area. The village had a population of about 50 in 1906 (Orth). Henry Z. Burkhart, 1st PM.

DOUGLAS

Estab. 20 Sep 1887. Dis. 1976. NCT:
Douglas CLSTA. of Juneau.

Located on the west shore of Gastineau Channel, about 2 miles southwest of Juneau, this community began life as a

mining camp in 1881. It later developed into an important fishing and fish processing center, and was incorporated as Douglas City in 1902. The town was named for Douglas Island, on which it is situated, and the island was named by Captain Vancouver for John Douglas, Bishop of Salisbury. Over the years Douglas has suffered several major fires, including the particularly serious 1937 blaze which destroyed much of the town. Today the town is largely economically and socially integrated with Juneau. Patrick H. Fox, 1st PM.

DOYHOF

Estab. 24 Jan 1918. Dis. 15 Jan 1936.
MT: Petersburg.

A former cannery village located on Scow Bay on the north coast of Mitkof Island, about a mile southwest of Petersburg. The name was a composite formed from the names of two partners who started the cannery: Doyan and Hofstad. Birgitte Hofstad, 1st PM.

DYEA

Estab. 6 Jul 1896. Dis. 19 May 1902.
MT: Skagway.

Dyea was an important mining supply camp during the Klondike Rush of 1898-99. Located at the head of Lynn Canal at the mouth of Taiya River, the valley of the Taiya offered a short overland route to the headwaters of the Yukon. The Dyea Trail to Chilkoot Pass was used by numerous prospectors before the 1899 opening of the White Pass & Yukon Railway provided a much easier route. The fortunes of Dyea rose and fell with the trail.

Initial development of the site was made by the Northwest Trading Company, which built a post here in 1880 to trade with the Chilkat Indians. Nothing further was added to the settlement until 1896 when news of the rich Klondike finds first became known. Very quickly thereafter Dyea grew into a bustling town with hotels, stores and services including a hospital and the largest brewery in Alaska. Samuel G. Heron, 1st PM.

EDNA BAY

Estab. 20 Dec 1943. Dis. 30 Jun 1944.
MT: Ketchikan. Re-estab. 6 Jan 1947.
Dis. 30 Jun 1951. MT: Klawock. Re-estab.

1 Dec 1954. Dis. 31 Aug 1960. MT: Ketchikan.

Served a logging camp on the southeast coast of Kosciusko Island, about 35 miles northwest of Klawock. The camp was located on the west shore of Edna Bay, and was named accordingly. Dominic F. Shadeck, 1st PM.

ELFIN COVE

Estab. 3 Aug 1935.

A small fishing village on the northern end of Chichagof Island, about 33 miles northwest of Hoonah. The settlement is on the east shore of Elfin Cove, a body given a romantically descriptive name. Ruth A. Swanson, 1st PM.

ENTRANCE ISLAND

Estab. 1 May 1947. Dis. 31 May 1956. MT: Juneau.

A small community located on the east side of Stephens Passage, at the entrance to Hobart Bay, 77 miles northeast of Sitka. The Territorial Government maintained a moorage here from 1946 to 1956, and, while the community numbered no more than 25, the post office functioned as long as the moorage was officially sponsored. Alice C. Wilde, 1st and only PM.

EXCURSION INLET

Estab. Aug 1943 as CNBR. of Seattle, WA Dis. Jan 1944.

Site of a World War II attempt to expand port facilities in Alaska. Located about 40 miles northwest of Juneau, near the mouth of the 8-mile estuary extending from Excursion River to Icy Strait, construction began in August 1942. The Guy F. Atkinson Company was the major civilian contractor, and, when a small detachment of Army Corps of Engineers arrived in October 1942, A.P.O. 984 was authorized to serve the locality. In March 1943 the port was activated, and throughout that year, while fighting ensued in the Aleutians, Excursion Inlet was a busy place. A second APO, numbered 727, replaced the original numbered unit in June 1943, and in August the Excursion Inlet Branch of Seattle was established to handle mail for the 180 civilian con-

tract personnel.

The war ended abruptly in Alaska following the expulsion of the Japanese in the autumn of 1943, and by April 1944 the War Department ordered the new port at Excursion Inlet closed.

FANSHAW

Estab. 2 May 1932. Was Cape Fanshaw. Dis. 20 Sep 1953. MT: Petersburg.

Served a fishing village and cannery at the southern end of Whitney Island, 71 miles east of Sitka. Originally known as Cape Fanshaw, closure of the cannery had reduced the population to about 25 in 1950 (Couch) and 5 in 1967 (Orth). Herman W. Hanson was 1st PM after the name change.

FLEET AIR BASE

Estab. 3 Sep 1938 as BR of Sitka. Dis. 10 Feb 1940. NCT: Naval Air Station BR. of Sitka.

Served the Naval Air Station built on Japonski Island, immediately west of Sitka. The construction contract was signed 29 Aug 1939 authorizing some 30 projects to be built at a cost of \$3 million. Construction continued on through the first years of the war. The earliest known postmarks of this Branch date from late September 1939, and it may be that the facility existed only on paper until that time.

FORT TONGASS

Estab. 6 Oct 1869. Dis. 2 Jun 1873.

Fort Tongass was established as a military post 20 Apr 1868 on a small island at the mouth of Portland Canal. The garrison was comprised of the 103 officers and men of Battery E, 2nd Artillery, and their mission was to prevent illicit trade with the Indians and maintain peace in the area. The post office was established with the appointment of Charles C. Walden as Postmaster, and mail was carried by monthly steamers out of Portland, Oregon, or by government supply vessels which called irregularly. The Army abandoned Fort Tongass during the summer of 1870, but a small civil community remained at or near the site to trade with the Tongass Tlingit Indians.

FORT WRANGEL

Estab. 6 Oct 1869. Dis. 28 Oct 1873.
Re-estab. 22 Jan 1874. Dis. 19 Feb 1902. NCT: Wrangell.

Occupied by the U.S. Army in the early summer of 1868, Fort Wrangel was on the site of a Russian post known as Redoubt Saint Dionysius. The Russians leased Wrangell Island to the British in 1839, and the British had occupied this stockade and renamed it Fort Stikine. So, when Battery I, 2nd Artillery of the U.S. Army arrived in 1868 to convert the "L-shaped" structure to an American post, they represented the third nation to occupy the site.

The first winter at Fort Wrangel was very hard, and in the summer of 1870 it was decided that the post would be abandoned. Meanwhile, a small civil community had grown up around the post, and a post office had been authorized. In 1871 a civilian, William K. Lear, bought the fort for \$600, and by 1873 there were only three white men in the whole community: a U.S. Customs Officer; Charles Brown, a trader; and William King Lear. The post office was discontinued in October of that year.

In August 1875 a company of the 21st Infantry was sent in to reactivate the post. Gold had been discovered in the Cassiar District of British Columbia, up the Stikine River, and Fort Wrangel, near the mouth of the Stikine, became a busy supply point for the miners. The military was once again withdrawn in June 1877, and, while the name of the community remained unchanged until 1902, the Army did not reoccupy the post until the Klondike Rush. R. R. Lear, probably William King Lear, 1st PM.

FUNTER

Estab. 3 Jul 1902. Dis. 19 Apr 1957.
MT: Juneau.

A fishing village and mining camp located on the north shore of Funter Bay, at the northwestern end of Admiralty Island, 18 miles west of Juneau. The bay was named in 1883 by W.H. Dall for Captain Robert Funter, a late 18th English explorer of the Northwest Pacific coast. Discovery of gold bearing quartz nearby led to the initial settlement about 1890. The population was never larger than a few dozen, and by the early 1950's had dwindled to about 10. James T. Largan, 1st PM.

GAMBIER

Estab. 15 May 1913. Rescinded: 19 May 1916.

Will W. Nickerson was appointed postmaster to serve this small community on Gambier Bay, Admiralty Island, but his appointment was rescinded and the office never operated.

GLACIER

Estab. 16 Sep 1964 as RS of Juneau.
Dis. 16 Feb 1966.

This rural station was named for, and located near, the Mendenhall Glacier, some 10 miles northwest of Juneau.

GODDARD

Estab. 12 Feb 1924. Was Sanitarium.
Dis. 15 Feb 1944. MT: Sitka.

Served a mineral springs resort on the northeast side of Hot Springs Bay, on the west coast of Baranof Island, 15 miles south of Sitka. The Russians maintained a spa here as early as 1800, and built a hospital here in 1841. The name change honored Dr. F.L. Goddard, owner of the resort. Mary C. Goddard, 1st and only PM.

GRINDALL

Estab. 23 Jun 1900. Dis. 31 Dec 1904.
MT: Kasaan.

Served a small pioneer community at Grindall Point on Kasaan Peninsula, east coast of Prince of Wales Island. Captain Vancouver named the point in honor of Captain Grindall of the Royal Navy. Isaac J. Tomlinson, 1st and only PM.

GUSTAVUS

Estab. 11 Jul 1925.

Serves a small fishing village on the north shore of Icy Passage at the mouth of Salmon River, about 50 miles northwest of Juneau. The name is derived from nearby Point Gustavus, at the entrance to Glacier Bay. Although unincorporated, Orth reported a population of 107 (1967). Jennie May Parker, 1st PM.

GYPSUM

Estab. 12 Apr 1906. Dis. 31 Aug 1925.
MT: Tenakee. Re-estab. 2 Jun 1939. Dis.
12 Jul 1941. MT: Tenakee Springs.

Served a gypsum mining camp on Iyoukeen
Cove, 12 miles northeast of Tenakee
Springs, on the east coast of Chichagof
Island. William R. Nichols, 1st PM.

(TO BE CONTINUED)

WANTED

New Mexico Postmarks prior to 1912
Some duplicates for sale.

FOR SALE

Territorial P.O.'s of Arizona.....\$2.00
Territorial P.O.'s of Florida..... 1.00

New Mexico Territorial Postmark
Catalogue (new 1981 Edition) ..\$25.00

Dr. S. H. Dike

1420 Carlisle Blvd. N.E.
Albuquerque, N.M. 87110

COVERS

U.S. TERRITORIALS
EARLY STATE & COUNTY
ARIZONA, NEW MEXICO, ALASKA, CALIFORNIA,

U.S. NAVALS AND MILITARY
PRE-1909, CLASSIC, AFTER 1930'S, INCLUDING SIBERIA

U.S., R.P.O.'S
BRANCH LINES, CLASSICS, POST-1950'S

WORLD WIDE SEAPOST AND PAQUEBOTS
ESPECIALLY GERMANY, JAPAN AND U.S.

BETTER FOREIGN
INCLUDING CHINA, JAPAN, RUSSIA, GERMANY AND
COLONIES, AND MUCH MORE, INCLUDING
UNUSUAL FRANKINGS

WRITE US YOUR WANTS AND SPECIALITIES

WE WILL BUY YOUR DUPLICATES AND
EXTRAS IN THE ABOVE AREAS!

The CANCEL COLLECTOR

FRED SCHEUER

Post Office Box 2356 - Mesa, Arizona 85204
Telephone 602 / 964-6739

WANTED Covers - cards with postal markings of N. Dakota area
of Dakota Territory or early statehood of North Dakota.

Need D.P.O's - R.F.D's - R.P.O's and other North Dakota
Postal History. Send list or copies. Want list available.

GORDON TWEDT, Box 280, Maddock, ND 58348

LA POSTA ADVERTISING RATE SCHEDULE

Column inch (1 inch X 3 3/8 inches).....	\$5.00
Quarter page (4 1/8 X 3 3/8 inches).....	\$20.00
or (2 X 7 1/4 inches).....	\$20.00
Half page (4 5/8 X 7 1/4 inches).....	\$45.00
or (9 1/4 X 3 3/8 inches).....	\$45.00
Full page (9 1/4 X 7 1/4 inches).....	\$100.00

Above prices apply to camera ready copy only.
Type setting is available at \$5 per column inch.
A \$25 surcharge will be charged for typing Full
page auctions; a \$15 surcharge for Half page.
Please send auction copy neatly printed or in
typed form.

For additional details, write or call: LA POSTA,
P.O. Box 135, Lake Oswego, OR 97034.
Phone (503) 246-5246.

NINETEENTH CENTURY OREGON POSTMARKS: BENTON COUNTY

By Charles A. Whittlesey

The Oregon Provisional Legislature created Benton County December 23, 1847, naming it for Thomas Hart Benton of North Carolina, long-time champion of U.S. control of the Oregon Country. At the time of its creation, Benton County encompassed all lands lying west of the Willamette River, and its imaginary extension south to California, below Polk County. In 1851 the southern boundary was redefined to approximately its current position when Umpqua County was erected. Benton County continued to include a rectangular area stretching from the Willamette River to the Pacific shore until the 1893 creation of Lincoln County reduced it to its present configuration.

As was the case with other counties of the mid-Willamette Valley, Benton County was settled primarily by farmers. The Census of 1850 found a population of 814 in the county. No towns were reported separately, and there were 110 farms.

Growth was rapid during the territorial period, and by 1860 Benton County had a population of 3,074, nearly 700 of whom lived in and around Corvallis, the community founded by Joseph Avery in 1847-48. By 1870 the population stood at 4,584; by 1880 it had climbed to 6,403; and, in 1890, the last census before creation of Lincoln County, the residents of Benton County numbered 8,650. The Census of 1900 reported 6,706 as a population for Benton County and 3,575 as a population for Lincoln County. Lincoln County was not wholly carved from Benton County however, as it also included land that had been the southern part of Tillamook County.

Benton County has experienced a steady, although comparatively unspectacular, increase in population during the first eight decades of the 20th century. The Census of 1980 reported 68,068 residents, up nearly 15,000 from 1970. Nearly 41,000, or some 60% of the county's residents live in Corvallis, the home of Oregon State University.

Corvallis, named with a word compounded from "cor" and "vallis" suggesting "heart of the valley", was first served by a post office named Avery's. The name was changed to Marysville in 1850, and finally to Corvallis in 1854. The community is situated on the north bank of Marys River, at the point it enters the Willamette. In 1860 the population of Corvallis was returned separately for the first time, and that year it stood at 531, ranking the town fifth largest in the young state behind Portland, Salem, Oregon City and Eugene City. The population reached 1,128 in 1880; 1,527 in 1890; 1,819 in 1900; and 4,552 in 1910. This relatively slow population growth during the last quarter of the 19th century is largely explained by the fact that Corvallis was not on the main route of the Oregon & California Railroad. A West Side line was built from Portland to Corvallis in 1879, but, aside from an extension west to Newport on Yaquina Bay, the line progressed no farther during the 19th century.

Most of the other population centers of Benton County have been and are quite small. Aside from Philomath, a community centered on a college founded by the United Brethren Church in 1867, which has a current population of 2,666, there are no other towns with as many as 600 residents. Monroe, once called Starr's Point, is an old town which was connected to Corvallis by construction of the Corvallis & Alsea River Railway in 1908. Its 1980 population was listed at 418, representing a loss of 25 residents during the 1970's.

The majority of Benton County's 32 19th century post offices operated within 6 miles of the Willamette River or along the Oregon Pacific Railroad. Alsea, Lobster and Box were prominent exceptions, all being located in the Alsea River drainage in the southwest part of Benton County.

Examples of 19th century postmarks have been documented from 17 of the 32 different post office names. Corvallis naturally leads in the number of types known with 13. It is followed by Monroe with 6, Philomath with 5 and Summit with 4. The table below details our current knowledge of postmarks used in 19th century Benton County.

BENTON COUNTY NINETEENTH CENTURY POSTMARKS

TOWN TYPE	NO.	NOTES	POSTMARK CODE	EARLIEST DATE	LATEST DATE	EXAMPLES KNOWN	KILLER TYPE
ALSEA (1871-Date)				25Dec 77		1	MSS.
1.			MSS.				
2.			C1EAlBBR25	20Sep(89)	20Nov(96)	6	Target
BLODGETT (1888-Date)							
1.			C1ENlBBR27.5	?			
CORVALLIS (1854-Date)							
1.			MSS.	29Aug 55		1	
2.	(1)		C1JAlBBR31	1Feb 55	5?	8	
3.			C1CNlR32.5	23May 59	19Aug 61	10	Cork grid
4.			C1CALBBR25.5	(69)		1	
5.	(2)		C3lGAlBBR29.5	23Jan 65	1Mar 70	8	Cork grid
6.			C1JNlBBR25.5	26Feb 72	9Feb 73	4	Star-in-circ.
7.			C1EAlBBR25.5	21Jun(74)	18Jun(78)	2	Cork
8.			C1JNlB26.5	26Jun 78	16Jun 79	10	Target
9.			C4lJl0NlB31.5	2Jan 80b	27Jun 81	7	Star-in-circ.
10.	(3)		C1ENlB27	1Apr 84	3Feb 91	11	Cork
11.			C1ENlB27	19Jul 92	1May 94	3	Cork
12.			C1ENlB28	10Jan 98	14Feb 98	2	Cork
13.			C1ETlB28	25Sep 99		1	Ovate bar gd.
DUSTY (1895-1902)							
1.			C1ENlB27	50Oct 96	6Mar 00	9	Target
GRANGER (1888-1903)							
1.			C1ENlBBR27.5	28Jan 97		1	Target
HARRIS (1893-1898)							
1.			Details unknown	97		1	Target
HOSKINS (1891-1958)							
1.			C1JNlBBR26.5	11Aug 98		1	Bar grid
JENNYOPOLIS (1852-1857)							
1.			MSS.	27Jul 52	2May 54	5	
KINGS VALLEY (1855-62, 1868-69, 1871-1900 & 1906-74)							
1.			MSS.	14Feb 74	3Feb 77	5	MSS.
2.			C1EAlB26	15Aug(84)		1	
3.			C1JNlBBR27.5	17Feb 93	12Feb 94	2	Target
LOBSTER (1883-1896)							
1.			C4lJNlB27.5	21Sep 89b		1	
MARYSVILLE (1850-1854)							
1.			MSS.	12Feb 51	4Jun 52	4	
2.			C1JAlBBR31	20Jul 53	15Mar 54	4	



2



1



2



3



5



6



7



8



9



10



11



1



1



1



3



1



2

TOWN TYPE	NO.	NOTES	POSTMARK CODE	EARLIEST DATE	LATEST DATE	EXAMPLES KNOWN	KILLER TYPE
MONROE (1874-Date)							
	1.		C1EAlBBR24.5	10Sep (81)	6Jun (83)	3	Target
	2.	(4)	C1JS1RRB31	23May 84b	6Mar 86r	3	Target
	3.		C31JN1B27.5	1Oct 85	29Feb 87r	3	Wheel-of-fort.
	4.		C1EN1BBR27.5	Feb 89	9Aug 93	5	Target
	5.		C1JS1B32	30May 96r		1	Fancy star
	6.		C1EN1B28	11Oct 97		1	Cork
PHILOMATH (1868-Date)							
	1.		MSS.	6Jan 69	27Sep 70	2	MSS.
	2.		C1EAlBBR24.5	11Jan (73)		1	Target
	3.		OC1E15N1RRB27	23Jun 81v	15Feb 87v	14	Star
	4.		C1EN1B27.5	6Oct 88	19May 92	2	Cork
	5.		C1JN1B28	9Nov 98		1	Cork
SOAP CREEK (1854-1857)							
	1.		MSS.	5?	5?	2	
STARR'S POINT (1852-1874)							
	1.		C1HA1R31	ca.61	ca.65	6	Open star
SUMMIT (1868-1959)							
	1.		C1EAlBBR24.5	4Nov 79		1	Target
	2.		C41JN1RRB34	12Nov 81	20Dec 81	2	Fancy US MAIL
	3.		C1JN1RRB26.5	87	26Mar 91	3	
	4.		C1EN1B28		12Jul 00	1	Cork
WELLS (1880-1936)							
	1.		C1EN1RRB26.5	12May 85	25Nov 86	2	Cork
	2.	(5)	C31J9N1B30	23Dec 93	9Jan 94	4	Wheel-of-fort.

- Notes: (1) The letter "S" is backwards.
(2) One example of 1868 shows no trace of inner circle, yet appears to be the same device.
(3) Some examples have no year date, i.e., date type A1.
(4) Ornate letters in "MONROE."
(5) There is some question about the outer rim being a double circle, but the author's opinion is that it is simply a wide-rimmed single circle.

WISCONSIN COVERS WANTED!

Stampless to 20th Century, Unusual Markings, Historical Letter Content, Single Items or Accumulations.

Wm. B. Robinson
1641 Bruce Lane, Green Bay, WI 54303



RAVEN PRESS

PHILATELIC PRINTING

P.O. BOX 135
LAKE OSWEGO, OR 97034
(503) 246-5246



1



2



3



4



5



2



3



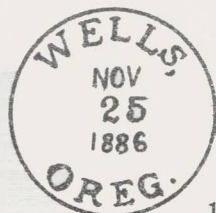
1



2



3



1



Randy Stehle

POSTAL HISTORY MAIL AUCTION NO. 2⁺

1115 VILLAGE DR., No. 4, BELMONT, CA 94002 (415) 595-3657

ARIZONA

1. CHRISTMAS, 1932, VG 4-bar on cachet cvr. (1905-35) E. \$8
2. CLEMENCEAU, 1946, VF duplex on GPC. (1920-54). Est. \$5
3. FAIRBANK, 1931, VF 4-bar on PPC. Est. \$5.00
4. FORT GRANT, 1938, F 4-bar on philat. cvr. Est. \$8.00
5. FORT HUACHUCA, 1916, VG 4-bar on PPC (bends). Est. \$6.
6. FORT HUACHUCA, 1942, VF mach. on cvr. w/Sta. Hosp. cc Est. \$5.00
7. GILA BEND, 1930, VG 4-bar on PPC. Est. \$6.00
8. GRANDVIEW, Jun 24, 1906, VG Doane on PPC. Overstruck w/Santa Barbara flag. Est. \$12.00
9. GREENWAY RUR. STA., TUCSON, 1942, G 4-bar on PPC. E. \$6.
10. LUHRS STA., PHOENIX, 1928, G duplex on special delv. cover. Est. \$8.00
11. ORACLE, 1929, Good 4-bar on PPC. Est. \$6.00.
12. PEACH SPRINGS, 1927, Good 4-bar on PPC. Est. \$5.00
13. SIERRA VISTA, 1957, VG mach. on PPC w/dues. Est. \$3.
14. STANDARD, 1938, VG 4-bar on PPC. (1924-38). Double struck. Last Day. Est. \$6.00
15. TORTILLA FLAT, 1933, F 4-bar on PPC. Est. \$5.00
16. WITTMANN, 1937, Fine 4-bar on PPC. Est. \$5.00

CALIFORNIA

17. BELL MOUNTAIN, 1953 PD, VF 4-bar on GPC. (1953-56) E. \$6
18. BINGHAMTON, 1906, F cds w/target on PPC. Est. \$10.00
19. BLAKE, 1909, VG 4-bar on PPC. Est. \$8.00
20. BULLARDS BAR, 1910, VG cds w/target on PPC. Est. \$8.
21. CANTARA, 1907, Good 4-bar on PPC. Est. \$5.00
22. COLUSA JUNCTION, 1909, VG light 4-bar on PPC. E. \$4.
23. DENVERTON, 1908, VG Doane on PPC. Est. \$6.00
24. EAGLENEST, 1909, VG 4-bar rec'd. on PPC. Est. \$6.00
25. EMMATON, 1910, F 4-bar rec'd on PPC. Est. \$6.00
26. ETHANAC, 1908, F duplex on PPC. Est. \$8.00
27. HARTSOOK, 1937, F 4-bar on PPC. Est. \$4.00
28. LOCKHART, 1957 LD, VF 4-bar on GPC. Est. \$6.00
29. NAPA SODA SPRINGS, 1913, VF 4-bar on PPC. Est. \$5.00
30. PARIS, 1907, F 4-bar rec'd on PPC. Est. \$20.00
31. PINE HILLS, 1924, VG 4-bar on PPC. Est. \$5.00
32. RANNELLS, ca. 1911, F 4-bar on PPC. Est. \$10.00
33. STOCKYARDS, 1909, VF 4-bar on PPC. Est. \$15.00
34. URBAN, 1912, VG 4-bar on PPC. Est. \$10.00
35. VISTA GRANDE, 1909, F 4-bar on PPC. Est. \$10.00

COLORADO

36. ARROW, 1909, F Doane Ty 3 on PPC. Est. \$6.00
37. GEM, 1913, VG 4-bar on PPC. (1907-13). Est. \$25.00
38. LONGS PEAK, 1935, F 4-bar on PPC. Stains. Est. \$4.00
39. STRATTON, May 19, 1909, F 4-bar on PPC. Est. \$4.00
40. VILLAGROVE, 1910, VG 4-bar on PPC. Est. \$4.00
41. YEISER, 1908, F Doane rec'd on PPC. Cnr. clipped. E. \$8.

IDAHO

42. GRANGEVILLE, Reg. 1903 on \$10 env. Tear @ Top. Short @ right. Still fine appearance. Est. \$10.00
43. ILO, 1909, F Doane on PPC. Est. \$8.00
44. KING HILL, May 31, 1909, VG 4-bar on PPC. 1st YR. E. \$8.
45. LINDEN, 1910, VG 4-bar on PPC. Est. \$8.00
46. SOLDIER, 1906, VG cds w/target on PPC. Est. \$6.00
47. WEIPPE, 1910, F Doane on PPC. Est. \$4.00

NEVADA

48. CARLIN, 1906, VF Doane on PPC. Est. \$5.00
49. CARLIN, ?, VG 4-bar on PPC. Est. \$3.00
50. COBRE, 1943, VF 4-bar on PPC w/salt bag (empty). E. \$6.
51. GARDNERVILLE, 1905, Fine duplex on PPC. Est. \$4.00
52. GENOA, 1907, VG 4-bar on PPC. Est. \$3.00
53. GLENBROOK, 1913, F 4-bar on PPC. Est. \$3.00
54. LAST FRONTIER VILLAGE, 1953, F 4-bar on PPC. E. \$5.
55. PALISADE, 1912, VG 4-bar on PPC. Est. \$3.00
56. SAINT THOMAS, 1938 LD, VF 4-bar on cach. cvr. E. \$6.00

NEW MEXICO

57. CERILLOS, Dec 26, 1912, VG 4-bar on PPC. Est. \$5.00
58. HOLLAND, 1915, VG 4-bar on PPC. Est. \$5.00
59. JEMEZ SPRINGS, 1920, G 4-bar on PPC. Est. \$4.00
60. LAMY, Dec 31, 1906, VG Doane on PPC. Est. \$5.00
61. ROY, 1913, F 4-bar on PPC. Est. \$5.00

OKLAHOMA

62. AGRA, 1910, VG 4-bar on PPC. Est. \$3.00
63. ALLUWE, 1911, VG 4-bar on PPC. Est. \$3.00
64. BESSIE, 1910, F Doane on PPC. Est. \$3.00

OKLAHOMA (continued)

65. BLACKBURN, 1909 DPO, VG 4-bar on PPC. Est. \$5.00
66. BRAGGS, 1909, VG 4-bar on PPC. Est. \$3.00
67. CARANISS, 1912 DPO, G 4-bar on PPC. Est. \$4.00
68. CARNEY, 1910 DPO, F Doane on PPC. Est. \$5.00
69. CERES, 1909 DPO, G 4-bar on PPC. Est. \$5.00
70. CHARLESTON, 1912 DPO, F 4-bar on PPC. Est. \$6.00
71. CLARKSVILLE, 1910 DPO, VF 4-bar on PPC. Est. \$6.00
72. COVINGTON, 1912, F 4-bar on PPC. Est. \$3.00
73. COY, 1909 DPO, F Doane on PPC. Est. \$8.00
74. GIBSON STATION, 1910 DPO, VG 4-bar on PPC. Est. \$6.
75. GRAY, 1910 DPO, F 4-bar on PPC. Est. \$5.00
76. GROVE, 1911, F 4-bar on PPC. Est. \$3.00
77. KELSO, 1913 DPO, F 4-bar on PPC. Est. \$8.00
78. KENDRICK, 1908, F 4-bar on PPC. Est. \$3.00
79. MANNSVILLE, 1910, F 4-bar on PPC. Est. \$3.00
80. MEEKER, 1910, F 4-bar on PPC. Est. \$3.00
81. MOORE, 1911, G 4-bar on PPC. Est. \$3.00
82. SEMINOLE, 1911, F 4-bar on PPC. Est. \$3.00
83. SKEDEE, 1908 DPO, F cds w/target on PPC. Est. \$8.00
84. WAYNOKA, 1909, VF 4-bar on PPC. Est. \$3.00
85. WEEKS, 1909 DPO, VG Doane on PPC. Est. \$6.00

OREGON

86. DERBY, 1909, VF 4-bar on PPC. Est. \$8.00
87. FRE MONT, 1910, F 4-bar on PPC. Est. \$8.00
88. ILLAHE, 1910, VF Doane on PPC. Est. \$5.00
89. SAINT JOHNS, 1908, VG duplex on PPC. Est. \$5.00
90. WALKER, 1915, VG 4-bar on PPC. Est. \$5.00
91. WECOMA, 1943, F 4-bar on cover. Est. \$6.00

WASHINGTON

92. EDGEWATER, Nov 21, 1911, VF 4-bar rec'd on PPC. 1st year. Light stains. Est. \$10.00
93. FORT CASEY, 1906, VG cds w/target on PPC. Est. \$5.
94. LANGLEY, 1908, VG 4-bar on soiled PPC. Scarce PO. Est. \$10.00
95. LATONA, 1900, Fine cds on cover. Est. \$12.00
96. NEW KAMILCHE, 1912, F 4-bar on PPC. Est. \$5.00

WYOMING

97. PINE BLUFF, 1909, VG duplex on PPC. Est. \$6.00
98. RAMBLER, 1906, Good 4-bar on PPC. Est. \$6.00

RAILWAY POST OFFICES (RPOs)

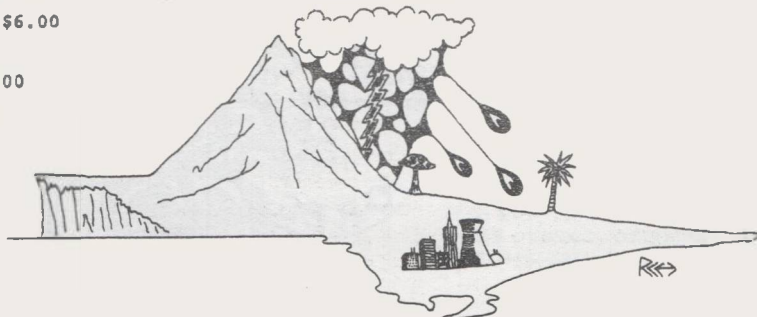
99. BUTTE & S.L. CITY, 1909, VG on PPC. Est. \$6.00
100. CORDOVA & KODIAK, 1939, VG on \$10 cover. Est. \$10.
101. DENVER & GD. JUNCT., 1904, G on PPC. Est. \$5.00
102. DEN. & STEAMBOAT SPGS., 1911, G on PPC. Est. \$10.00
103. EL PORTAL & MERCED, 1908, F on PPC. Est. \$10.00
104. K. CITY & PUEBLO, 1906, VG on PPC. Est. \$5.00
105. LA JUNTA & ALBUQ., 1905, VG on PPC. Est. \$5.00
106. MEM. & SO. McALESTER, 1907, G on PPC. Est. \$6.00
107. MINOT & BISMARCK, 1911, VG on PPC. Est. \$5.00
108. MOBRIDGE & FAITH, 1948, F on cover. Est. \$5.00
109. OROVILLE & SACRA., 1908, F on PPC. Est. \$10.00
110. PITTSBURGH, PA. ST., 1902 on cover. Est. \$10.00
111. TUOLUMNE & STOCK., 1912, F on PPC. Est. \$10.00
112. WINNEMUCCA & SACRA., 1916, VG on PPC. Est. \$8.00

RFDS

113. CARPENTERIA, Cal., 1901, VF Rt. 1 on cover shortened at left. Est. \$20.00
114. LATON, Calif., 1908, F Rt. 2 on PPC. Est. \$10.00
115. REDLANDS, Cal., 1904, F on GPC. Est. \$15.00
116. SONOMA, Cal., 1901, F on GPC. Est. \$10.00
117. REARDEN, Wash., Jun 10, ??, G on PPC. Est. \$10.00

All lots sold to highest bidder at a slight advance over the second high bid. Buyers pay mailing costs. Improperly described lots may be returned for full refund within 10 days. Free xeroxes with CASE. Minimum bid on each lot is \$2.00.

⁺CLOSING DATE: JANUARY 31, 1983.



RECENT BOOKS OF INTEREST

THE SALT LAKE CITY POST OFFICE, 1849-1869. By Les Whall. Published by Crabtree Press, Salt Lake City, 1982. Card bound, illustrated, 202 pages. Available from the author, price unknown: 990 W. Foxglove Dr., Salt Lake City, UT 84107.

An interesting and well-written account of the early years of Salt Lake City's postal service. Les Whall has given three years of loving, painstaking work to tell the detailed story of the establishment of mail service in Utah. Relying on records and reports from government, church and newspaper sources, the author has assembled a highly readable account of not only Salt Lake City's postal history, but also that of the Central Overland postal service. Most of the material presented has never before been published, and the book is most highly recommended for the Western postal history library.

THE POSTAL MARKINGS OF THE CANAL ZONE. By Lawson P. Entwistle. Published by The Canal Zone Study Group. Card bound, 8.5x11-inches, well illustrated, 262 pp. Available at \$7.00 postpaid from The Canal Zone Study Group, 29 S. South Carolina Ave., Atlantic City, NJ 08041.

While not concerned with The West in its geographic scope, this fine book must rate as one of the outstanding postal history literature buys of the year. Entwistle carefully details the history and postal markings of all post offices in the Canal Zone from its 1904 beginning to its 1979 return to Panama. The illustrations of postmarks are first rate, and there are photographs of some of the post offices and even the cancellation devices. Civil and military offices are treated, and there is even a plastic device for measuring degrees of arc in lettering included in a back pocket. As an addition to a postal history library, it would be hard to find a better reference on the Canal Zone at four times the price.

A CHECKLIST AND VALUE GUIDE FOR OREGON POST OFFICES, 1847-1982. By Richard W. Helbock, with special assistance from Charles A. Whittlesey & William T. McGreer. Published by Raven Press, 1982. Card-bound, 5.5x3.75 inches, 86 pp. Available from H.R. Morier, P.O.

Box 40106, Portland, OR 97204 at \$3.95 postpaid.

This pocket-sized book is a companion to OREGON POST OFFICES, 1847-1982. It contains no dates of operation, and features two distinct parts: an alphabetical checklist of all Oregon post offices, branches and stations; and a county by county graphic check list arranged by value class. The value classes, which range from "0" for an operating office to "9" for a very rare office, have been derived to provide collectors with an idea of current market values of the most common postmark for each Oregon post office. The book should be useful as both a portable inventory checklist and ready reference scarcity guide.

(EDITOR'S NOTE: H.R. Morier is a new firm engaged in the distribution of philatelic literature. My association with this firm is purely contractual. I am not an owner, nor a partner in the firm, and correspondence intended for H.R. Morier should not be mailed to me or LA POSTA.)

WHEN IN PORTLAND, OREGON DROP IN AND VISIT US

- Philatelic Literature
- Covers
- Stamps of the World
- Stamp Supplies
- Mail Orders

ANNOUNCING HELBOCK'S CHECKLIST &
VALUE GUIDE FOR OREGON POST OFFICES.
AVAILABLE HERE: \$3.95 postpaid.

ROSE CITY STAMPS UNLIMITED
421 S.W. 5th, Suite 203
Portland, OR 97204 (503)220-0293

HOURS: Monday-Friday, 10:00AM-5:30PM

THOMAS M. MILLS

Mall Bid sale no.2

11525 Pacific Hwy., Portland,
OR 97223

PHONE: (503) 245-6086

ALASKA

1. CORDOVA & KODIAK RPO, 1940, VF dup. on phil. card w/map of towns served by RPO. Est. \$25.00
2. FAIRBANKS, 1907, Ty2-Doane; about F. Est. \$10.
3. KETCHIKAN, 1902, Ty4, VF strike on U358. E. \$10
4. KOGGIUNG, 1942, Ty1, VF 4-bar on PPC. Est. \$8.00
5. TANANA, 1913, Ty3, VF 4-bar on PPC. Est. \$5.00

ARIZONA

6. COCHISE, 1910, Ty7, VF 4-bar on PPC. Est. \$15.
7. ORO BLANCO, 1885, Ty2 (latest), Exc cds w/target on clean U331 w/smooth crease. Est. \$30.00
8. McDOWELL, 1907, Exc Ty6 ties #319 to U395. E. \$25.
9. RUTHERFORD, 1909, F Ty 1 on PPC. Est. \$15.00

CALIFORNIA

10. BECKWITH, 1898, F-VF cds on VF cvr. (1870-32) E. \$15
11. BOCA, 1906, F Doane Ty 3 on cvr. (1872-45) E. \$5.
12. FIELDS LANDING, 1898, F-VF cds on U312. Est. \$5.
13. FOREST CITY, 1892, VF red dcds on cvr. Est. \$10.
14. GERMANTOWN, 1879, Fine cds on UX5 (1877-18) E. \$8.
15. LA GRANGE, 1882, VF blue cds on cvr. Est. \$15.00
16. OPHIR, 1902, VF cds on cvr. (1872-10). Est. \$12.
17. SATTLEY, 1905, VF cds on U395 (1884-18) Est. \$6.

COLORADO

18. ARROW, 1909, F Doane Ty 3 on PPC. (1905-15) E. \$8.
19. ASSOCIATION CAMP, 1918, VF 4-bar on PPC. E. \$4.
20. EATON, 1885, lovely blue grey cds on VF cvr. w/pair of #206. Most attractive. Est. \$45.00
21. LAKE CITY, 1876?, F-VF cds on cvr as fwd.mk. E. \$8.
22. OURAY, 1880, two red cds w/star-in-circles tie 3 #182s on cvr. w/sm.tear @ T. F-VF. Est. \$25.
23. SUMMITVILLE, 1886, F cds on U277. (1880-48) E. \$15

DAKOTA TERRITORY

24. ARLINGTON, 1886, Exc. octagon on U277. Est. \$25.
25. FLANDREAN, 1880, red Fancy Cds & star killer as rcv. mark on UX5. VF strike. Est. \$15.00
26. LEONA, 1887, light cds w/star on cvr. Est. \$15.00

IDAHO

27. BLACKFOOT, 1892, F cds on UX9. Est. \$4.00
28. BLOOMINGTON, 1894, VF cds on U349 w/corner fold at upper left. Still VF cvr. Est. \$15.00
29. LENIA, 1915, about F 4-bar on PPC. (1901-23) E. \$5.
30. LEWISTON, 1885, F-VF cds on cvr. Est. \$8.00
31. POSTFALLS, 1915, VF duplex on cvr. Est. \$5.00
32. WALLACE, 1891, F-VF cds on UX9. Est. \$4.00
33. WESTMOND, 1907, F lt. 4-bar on PPC. (1906-25) E. \$9

INDIAN TERRITORY

34. COODY'S BLUFF, 1888, VF cds on U311, DPO, Est. \$20.
35. PAULS VALLEY, 1892, VF cds on U311. Est. \$15.00
36. PORUM, 1907, F Doane Ty 2 on PPC. Est. \$20.00
37. PERA, 1907, F duplex on UX18. Est. \$6.00

KANSAS

38. BAXTER SPRINGS, 1867, Exc. cds. on cvr w/#68. E. \$25.
39. BELLES PRINGS, 1886, VF dcds on U277 (1876-90) E. \$15
40. BLOCK, 1885, VF fancy cds on U277. (1884-04) E. \$25.
41. FREDONIA, 1881, F-VF purp. cds w/star on cvr w/re-pairable tear. Est. \$12.00
42. HARDILEE, 1886, F-VF cds on U277. (1882-01) Est. \$10

MINNESOTA

43. AGDER, 1910, VF 4-bar on PPC. 11 month PO! Est. \$30
44. BREMEN, ca. 1886, VF cds on U277 (1872-88) Est. \$15
45. FAITH, 1897, VF cds on Reg. cvr. (1883-11) Est. \$12
46. KEENE, 1903, VF cds on cvr. (1898-1904) Est. \$15.00
47. MANTORVILLE, 1887, VF dbl circ. on U278. Est. \$7.

MONTANA

48. BLAKESLEE, 1915, F-VF 4-bar on U406. (1914-37) E. \$9
49. DILLON, 1887, VF cds on U277. Est. \$20.00
50. FORT BENTON, ca. 1885, VF cds on VF cvr. w/RIVER PRESS cc. Franked w/2¢ red brown. Est. \$40.00
51. GOLD CREEK, 1894, VF purple quad. circle w/Maltese cross killer ties 2¢ Columbian to VF cvr. Est. \$30
52. WHITE SULPHUR SPRINGS/M.T. 1881, V-VF oct. on cvr. w/very light stain at left. Attractive. Est. \$30.

NEVADA

53. CARSON CITY, 1880, VF red violet cds on clean cvr. w/Saddle & Harness Mfg. cc. Est. \$40.00

NEVADA (continued)

54. EUREKA, ca. 1879, F-VF purp. cds on U163. Est. \$20.00
55. GOLD HILL, ca. 1868, Exc. dble cir. on U58. Est. \$25.00
56. HAMILTON, ca. 1868, VF Wells, Fargo & Co. mark on WF franked U58. Est. \$35.00
57. TREASURE CITY, readable WF mark on WF frk. U58. Est. \$30
58. VIRGINIA CITY, 1865, VF WF mark on WF frk. U58. Est. \$40
59. WADSWORTH, ca. 1875, VF green cds on cvr w/#147. Est. \$35

OHIO

60. LINDENVILLE, 1887, F lt. cds on Reg. cvr. (1849-10) E. \$10
61. MECHANICSBURGH, 1893, VF cds on U349. Cover is advert. of Chicago Br. of H.J. Heinz. Est. \$8.00
62. NORTH AMHERST, 1887, F-VF cds on U277. Est. \$5.00
63. OLMSTED, 1886, F-VF blue grey cds on U277. (1845-01) E. \$6
64. OMAR, 1879, Exc. purple cds & star-in-cir. on UX5. E. \$15
65. SHERIDAN COAL WORKS, 1887, VF cds on U277. (1866-94) E. \$15

OKLAHOMA

66. BLUNT, 1909, VF 4-bar on U398, DPO, Est. \$8.00
67. COSMOS & POSTLE, 1906, both Doane Ty 3 VF on PPC. Both scarce towns; COSMOS is rcv.mk., POSTLE frd.mk. Est. \$15
68. ROSSVILLE, 1899, VF cds on U311, DPO. Est. \$15.00
69. YUKON, 1893, VF cds on U349. Est. \$15.00

OREGON

70. ALBANY, 1884, VF cds on lovely cvr. to Germany. #206, 210 on clean U311 make 5¢ rate. Very nice. Est. \$25.00
71. DALLAS, 1894, VF rimless circle on cvr w/231. Est. \$30.00
72. FOREST GROVE, ca. 1877, F-VF cds on cvr. w/3¢ gn. E. \$15.00
73. FOSSIL, 1889, VF fancy dcds & wh. of fort. on U312. E. \$40.
74. GATEWAY, 1921, VF 4-bar on U430 rough @ RT. Est. \$6.00
75. JEFFERSON, ca. 1877, VF cds on clean U163. Est. \$20.00
76. MONMOUTH, ca. 1875, VF cds on 1¢ U113. Est. \$15.00
77. OPAL CITY, 1915, VF 4-bar on cvr. rough @ RT. Est. \$7.
78. WOODVILLE, 1884, VF cds on VF cvr. w/#210. (1876-12) E. \$50.

UTAH

79. ALTA, ca. 1874, F-VF blue cds on cvr. w/3¢ gn. Est. \$15.
80. BLUFF, 1899, F-VF cds on U362. Est. \$10.00
81. CACHE JUNCTION, 1909, VF Doane Ty3 on UX19. Est. \$5.
82. HUNTSVILLE, 1893, VF cds on U349. Est. \$12.00
83. PLAIN CITY, 1885, VF cds on U277 (1864-03) Est. \$30.
84. SILVER REEF, ca. 1880, F-VF cds on cvr. Est. \$30.00

TEXAS

85. CARRIZO, 1892, VF blue cds ties pr. of #219 to VF cvr. Zapata Co. DPO (1854-1901). Est. \$20.00
86. DOUBLE HORN, 1886, lovely MSS on U277. (1857-11) E. \$25.
87. EVERGREEN, TEX./BENJ. F. ELLIS, P.M., 1886, VF red violet PM marking on VF U277. Choice item. DPO. Est. \$45.00
88. EZZELL, 1886, VF MSS. on U277. (1883-1914) Est. \$25.00
89. FORT CONCHO, ca. 1877, VF cds w/star on U163. E. \$70.00
90. FORT STOCKTON, ca. 1880, VF cds on VF cvr. Est. \$40.00
91. GUIDE, 1894, VF cds on U349. (1882-1894) Est. \$30.00

WASHINGTON

92. ALPHA, 1908, F-VF Doane Ty2 on PPC. (1890-1960) E. \$4.00
93. BISSELL, 1901, VF cds on U362. (1894-1925) Est. \$12.00
94. CERES, 1911, VF 4-bar on PPC. DPO out 1931. Est. \$10.00
95. CLINTON, 1903, Exc. cds on VF Reg. cvr. (1892-09) E. \$20.
96. FAIRHAVEN, 1899, Exc. cds on clean cvr. (1889-04) E. \$18.
97. HAZZARD, 1899, VF cds on clean cvr. (1885-04) Est. \$20.
98. PEACH, 1910, F-VF 4-bar on PPC. (1898-38) Est. \$10.00
99. SPRINGFIELD, 1900, VF cds on UX14. (1890-06) Est. \$15.00
100. TULALIP, 1913, VF 4-bar on TULALIP INDIAN AGY. penalty envelope. Very attractive item. Est. \$20.00

WYOMING

101. CHEYENNE CITY, 1887, F-VF cds on UX9. Est. \$15.00
102. FORT RUSSELL, 1910, F-VF 4-bar on PPC. Est. \$6.00
103. FORT WASHAKIE, 1892, VF cds on U313. Est. \$60.00
104. LARAMIE, 1890 (Jun 18), Exc. cds on VF cvr. Est. \$12.

RAILWAY POST OFFICES (Towle Nos.)

105. COBRE & ELY, 1941, (977.1-A-1) VF PM on VF cvr. Est. \$8.
106. JOSEPH & LA GRANDE, 1942, F-VF duplex on card. Est. \$5.
107. K.C. & Colo Springs/Feb 26 1906/M.L. Schu?? ties 1¢ gn to PPC. VF agent marking. Est. \$25.00
108. NAHCOTTA & ASTORIA, 1910, F duplex on PPC. Est. \$30.00
109. OM. & COLO. SPRINGS, R.P.O./W.D., 1938, F-VF dup. on cvr. Est. \$5.00
110. SPOKANE & ADRIAN, 1916, VF dup. on PPC. Est. \$20.00

MINIMUM BID: \$2.00 Bidding increments: \$2-25:\$1; \$26-50:\$2; and Over \$50:\$5.

All lots shipped insured at buyers expense. Lots sold at a slight advance above the second highest bid. Improperly described lots are returnable within 10 days.

BIDS CLOSE: JANUARY 21, 1983

THE POST OFFICES OF UTAH,

By Dan Meschter with Arthur E. Rupert

Part XIV, Washington County

Washington County was one of the new counties erected in 1852 when the Legislature redefined the eight earlier counties, and created four new ones to blanket the entire Territory. As in other cases, erection of the county preceded settlement by more than a year. The area of Washington County has since been reduced, and it now occupies the southwest corner of the State.

Geographically, Washington County contrasts markedly with the rest of Utah. It is mostly mountains broken by numerous valleys, the most important of which are the Rio Virgin and Santa Clara River valleys. Their elevations are low by Utah standards, being below 3,000 feet over much of their lengths. Other valleys, higher in the mountains, are narrower and grassy, and support fine herds of cattle. In the eastern part of the county, a spectacular canyon has been preserved as Zion National Park.

The first settlers found the soils arid and alkaline, but with typical Mormon perseverance, they reclaimed them and made them fruitful.

Above all, it is the climate which makes Washington County just a little different. The summers are hot and the winters are mild. The growing season is long. Early settlers were encouraged to plant cotton, which they did with some success. By the time cheaper cotton cloth brought in by the railroad displaced this local industry, Washington County had become known as Utah's "Dixie" -- a name by which it is still called. In his later years, Brigham Young built a winter home in Saint George.

The area of Washington County was long known to traders on the Old Spanish Trail from Santa Fe to Los Angeles, which crossed the county north to south via either Harmony or by an alternate route to the west via Gunlock.

Possibly the first settlers in the county were John D. Lee at Fort Harmony in 1852, and Jacob Hamblin, legendary scout, Indian trader and missionary at Santa Clara in 1853. The mission to the Indians at Santa Clara carried out Mormon policy of educating and settling the Indians on the land with considerable success.

The county settled up rapidly at numerous places in the late 1850's, but there was no government mail service until post offices were established at Washington, Heberville, Santa Clara and Tokersville all on the same day -- February 10, 1859.

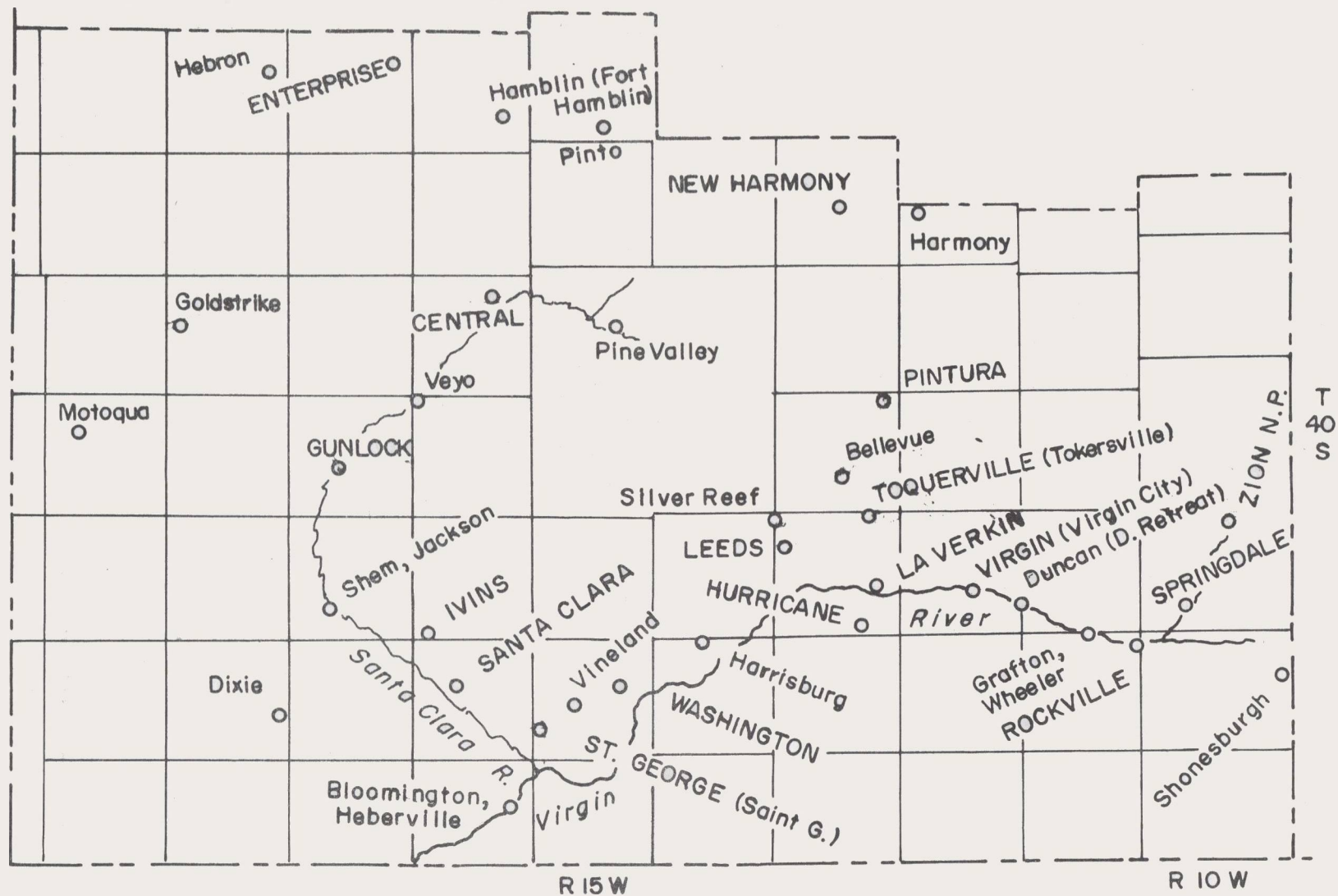
Meanwhile, a colony of settlers under the leadership of Orson Pratt was directed to build a city near the junction of Rio Virgin and the Santa Clara River. The name was prescribed to be Saint George. With no disrespect to the legendary British dragon slayer intended, the name actually honored George A. Smith, the leading apostle of the Latter Day Saints. One of the first things accomplished after arrival of the settlement expedition was the establishment of a post office in December 1861 with Pratt as Postmaster.

Saint George became one of the best planned and executed of the Mormon colonies in southern Utah. A Mormon Temple was completed in 1881, and, along with Dixie College, Saint George has become a religious, educational and commercial center.

Mining never played a dominant role in the history of Washington County, although several important mines were developed. Most famous is the Silver Reef District, which was discovered about 1870. The deposit was situated in a sandstone ledge, or "reef" in miners' lingo. Its life was exciting and short -- barely 10 years and a little more -- during which more than \$10 million in silver was produced. Two post offices were associated with the mining boom: Leeds, named after the first location, and Silver Reef. Silver Reef struggled on as long, or longer, than hope for a recovery lasted, and then died to leave a modern ghost town. Leeds was more resilient, and still survives.

The local economy of Washington County today depends heavily upon agriculture and pastoralism, but outdoor recreation and tourism make substantial contributions.

A total of 48 post office names are listed for Washington County. This list includes four name changes and one office that did not operate. The stability and healthy economic climate of the county is indicated by the fact that 17 offices are still operating.



WASHINGTON COUNTY

UTAH POST OFFICES

Washington County

<u>Post Office</u>	<u>Established</u>	<u>Discontinued</u>	<u>Notes</u>
Bellevue	22 Feb 1869	22 Aug 1878	
Bloomington	15 Apr 1886	13 Jul 1889	M. to St. George
	31 Jan 1903	30 Nov 1927	M. to St. George
Central	1 Sep 1909	Operating	
Diamond	7 Dec 1864	14 Oct 1867	
Dixie	28 Dec 1901	30 Jun 1903	
	22 Jun 1905	14 Dec 1907	
Duncan	4 Dec 1883	18 Oct 1887	M. to Virgin City
Duncans Retreat	2 Feb 1864	10 Apr 1882	M. to Toquerville
Enterprise	11 Jun 1899	Operating	
Fort Hamblin	10 Apr 1871	3 Feb 1875	NCT: Hamblin
Foster	25 Jan 1884	18 Sep 1884	M. to Gunlock
Goldstrike	12 Aug 1915	15 Aug 1916	M. to Enterprise
Grafton	2 Feb 1864	5 Oct 1866	
	21 Jun 1871	10 Apr 1882	M. to Toquerville
Grass Valley	5 May 1910	26 Jan 1911	Rescinded
Gunlock	25 May 1883	30 Aug 1887	M. to Santa Clara
	30 Jan 1888	Operating	
Hamblin	3 Feb 1875	14 Feb 1903	M. to Pinto
Harmony	10 Feb 1859	16 Jun 1864	
Harrisburg	17 Apr 1863	26 Jun 1882	
	9 Jan 1896	15 Feb 1900	
Heberville	10 Feb 1859	9 Jul 1860	
Hebron	10 Apr 1871	30 Oct 1905	M. to Enterprise
Hurricane	18 May 1906	Operating	
Ivins	25 Sep 1923	Operating	
Jackson	25 Jan 1884	30 Aug 1887	
	2 Jun 1888	15 May 1891	M. to Santa Clara
La Verkin	3 Aug 1903	Operating	
Leeds	2 Mar 1870	11 Apr 1879	
	3 May 1894	2 Dec 1966	Conv. to Rur. Br.
Leeds Rural Br.	2 Dec 1966	Operating	Of St. George
Millersburgh	30 May 1867	23 Mar 1868	
Motoqua	23 Jul 1925	31 Oct 1949	M. to Littlefield Ariz.
New Harmony	28 May 1866	Operating	
Pine Valley	7 Dec 1864	31 Mar 1948	M. to Central
Pinto	7 Dec 1864	29 Nov 1930	M. to Newcastle
	30 Dec 1930	30 Sep 1941	M. to Newcastle
Pintura	1 Jul 1920	Operating	
Rockville	2 Feb 1864	6 May 1966	Conv. to Rur. Br.
Rockville Rural Br.	6 May 1966	Operating	Of Springdale
Saint George	4 Dec 1861	1 Oct 1948	NCT: St. George
Santa Clara	10 Feb 1859	13 Apr 1868	
	23 Jan 1884	Operating	
Shem	26 Mar 1903	30 Nov 1907	M. to Santa Clara

<u>Post Office</u>	<u>Established</u>	<u>Discontinued</u>	<u>Notes</u>
Shonesburgh	18 Jun 1872	26 Apr 1876	
Silver Reef	7 Feb 1877	5 Sep 1895	M. to Toquerville
Springdale	2 Feb 1864	8 Sep 1874	
	10 Nov 1896	Operating	
St. George	1 Oct 1948	Operating	Was Saint George
Tokersville	10 Feb 1859	26 Apr 1875	NCT: Toquerville
Tonaquint	5 Jul 1861	10 Jul 1862	
Toquerville	26 Apr 1875	Operating	Was Tokersville
Veyo	26 Oct 1917	25 Aug 1967	M. to Central
Vineland	12 May 1864	9 Apr 1866	
Virgin	27 Aug 1895	Operating	Was Virgin City
Virgin City	31 May 1860	27 Aug 1895	NCT: Virgin
Washington	10 Feb 1859	Operating	
Wheeler	6 Jun 1900	14 May 1910	M. to Rockville
Zion National Park	19 Jun 1920	15 Sep 1957	
	1 Jun 1958	Operating	Summer PO; Br. of Springdale

Notes: M. to - Mail to; NCT: - Name changed to:

READERS CORNER

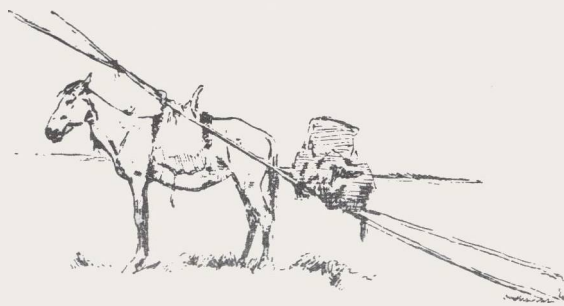
Frank Havnoonian, 817 Drexel Ave., Drexel Hill, PA 19026, writes:

I was given a matched pair of special May 1, 1935, event covers in response to my ad in LINN'S, whereby I described my topical interest as "bicycles and cycling". In 1894 a railway baggage and mail strike caused a Mr. Banta, bicycle shop owner in Fresno, to deliver mail by bicycle courier over a mountainous path to San Francisco and back again. My pair of covers were delivered 40 years later (in 1935) in some sort of bicycle race. Could anyone tell me something more about this 1935 race, or why it was ever staged as a race? I would be most grateful if anyone could help me with some of the history behind the matched pair of covers.

Hal Vogel, 19 Neptune Lane, Willingboro, NJ 08046, writes:

Regarding your detailed piece on the tracing of postmarks, you might be interested in another method that I have occasion to use which entails first photocopying the postmark, then having this photocopy copied onto sensitive plastic transparency sheets. The advantage of this system is that it doesn't rely on one's artistic or technical talents, or lack thereof. The resulting copies may be used for measurement and comparison.

Questions and comments from readers are always welcome.



MY POSTAL HISTORY AUCTIONS:

Specialize in covers from the area you read in LA POSTA.

Are held about four times a year in San Francisco.

Are a prime source of postal history material knowledgeably described.

Are a good place to sell collections or duplicate covers.

NEXT SALE FEBRUARY, 1983.

SAMPLE CATALOG

BY FIRST CLASS MAIL \$1.00

HENRY M. SPELMAN III

P.O. BOX 645-LP
SAN ANSELMO, CA 94960

Richard W. Helbock Mail Auction No. 2

P.O. BOX 135, LAKE OSWEGO, OR 97034

ALASKA

1. CATALLA, 1904, Ty1 (earliest) ties pr. lt green to VF cvr. to Edmonton. PM is VF, but a bit off cvr. at Top (part of AL missing). Still nice. Est. \$60.00
2. FLAT, 1920, Ty2, VF 4-bar on PPC. Est. \$25.00
3. GOLDEN, 1913, Ty1, VF 4-bar on clean cvr. Rare 4-yr. PO (1912-16) and a choice item. Est. \$150.00
4. IDITAROD, 1914, Ty4, about Fine on PPC. Est. \$25.00
5. METLAKATLA, 1910, Ty1, F-VF Doane Ty2 on PPC. Est. \$15.
6. NOME, 1908, Ty11, VF on PPC. The scarce flag. Est. \$15.
7. SALCHAKET, ca. 1914, Ty1, Fine strike, but "CHA" off cover at Top. Scarce office (1909-26). Est. \$40.00
8. WASHBURN, 1909, Ty1, Fine light 4-bar on clean cvr. Scarce on cvr. (1905-13). Est. \$35.00
9. WRANGELL, 1911, Ty2, VF on Ketchikan view PPC. Est. \$10.

ARIZONA

10. DEWEY, 1908, Ty3, F-VF Doane Ty2 on PPC. Est. \$20.00
11. DOME, 1910, Ty2, Lt. readable Ty2 Doane on PPC. Est. \$25.
12. FORT HUACHUCA, 1910, Ty9 VF on PPC. Est. \$30.00
13. GRANDVIEW, 1907, Ty1, Exc. Doane Ty2 on PPC. Est. \$35.
14. LIBERTY, 1912 (Dec), F-VF 4-bar on PPC. Est. \$20.00
15. LOWELL, 1907, Ty1 as rcv. mk. on PPC. Est. \$10.00
16. MANILA, 1917, scarce 6 yr. PO (1912-18), VF 4-bar on PPC. Est. \$45.00
17. TEVISTON, 1910, Ty8 (earliest), F-VF on PPC. Est. \$20.
18. TUBA, 1908, Ty3, F-VF Doane Ty2 on PPC. Est. \$20.
19. TURNER, 1909?, Ty2, F-VF Doane T2 on PPC. Est. \$35.
20. WHITERIVER, 1911, Ty3, VF 4-bar on PPC. Est. \$50.

CALIFORNIA

21. BALLARAT, 1908, VF Doane Ty2 on cvr. (1897-17). Est. \$15.
22. BONNY DOON, 1910, VF 4-bar on PPC. (1887-30). Est. \$5.
23. BULWINKLE, 1910, VF 4-bar on PPC. (1909-22). Est. \$10.
24. CAREAGA, 1909, Exc. 4-bar on PPC. (1902-09). Est. \$25.
25. FITCHBURG, 1909, VF 4-bar on PPC. (1908-11). Est. \$15.
26. MAYTEN, 1909, VF 4-bar on PPC. (1887-19). Est. \$15.
27. RANGER, 1907, VF 4-bar on PPC. (1907-15). Est. \$20.
28. THRALL, 1906, VF Doane Ty2 on PPC. (1904-14). Est. \$15.
29. NEIGHBOURS, 1914, Exc. 4-bar on PPC. (1905-20). Est. \$15

COLORADO

30. ATWOOD, 1909, VF Doane Ty3 on PPC. Est. \$4.00
31. AURORA, 1913, F 4-bar on PPC. (1908-39). Est. \$5.00
32. BASHOR, 1910, F-VF 4-bar as rcv. mk. on PPC postmarked PROWERS. Both DPOs; Bashor (1909-18). Est. \$10.00
33. BURDETT, 1908, VF cds on PPC. (1888-37). Est. \$8.
34. DUBOIS, 1909, VF 4-bar on PPC. (1894-10). Est. \$25.
35. ELDORA, 1911, VF Doane Ty2 on PPC. (1897-67). Est. \$5.
36. FLAGLER, 1901, VF cds on cvr. w/20 red. Est. \$8.00
37. GULCH, 1912, F-VF 4-bar on PPC. (1895-16). Est. \$20.
38. IOLA, 1908, VF purple 4-bar on PPC. (1896-63). Est. \$8.
39. LONGS PEAK, 1917, F-VF 4-bar on PPC. (1909-36). Est. \$10.
40. MESSEX, 1912, VF 4-bar on PPC. (1907-42). Est. \$8.
41. MOGOTE, 1914, F-VF 4-bar on PPC. (1897-20). Est. \$15.
42. PALMER, 1909, VF 4-bar on PPC. (1894-12). Est. \$8.
43. POWDER HORN, 1910, Exc. Doane Ty3 on PPC. Est. \$5.
44. TIMNATH, 1913, VF 4-bar on PPC (Ft. Collins street scene). Est. \$5.00

IDAHO

45. ATHOL, 1910, F-VF Doane Ty3 on PPC. Est. \$4.00
46. FALK, 1911, VF 4-bar on PPC. (1910-22). Est. \$10.
47. FALKS STORE, 1911, VF 4-bar on PPC. (1871-10). Est. \$10.
48. MEADOWS, 1910, VF 4-bar on PPC. (1883-66). Est. \$5.
49. OTIS, 1907, Exc. cds on PPC. (1899-11). Est. \$15.00
50. ROSEBERRY, 1910, F-VF 4-bar on PPC. (1891-43). Est. \$8.
51. VALLEY, 1912, VF purple 4-bar on PPC. (1902-20). Est. \$10.
52. THARP, 1911, F-VF 4-bar on PPC. (1909-15). Est. \$15.00
53. WESTMOND, 1908, VF 4-bar on PPC. (1903-25). Est. \$15.
54. WRENCOE, 1912, F 4-bar on PPC. (1901-16). Est. \$20.

MONTANA

55. BIGFORK, 1908, F-VF Doane Ty2 on UX18. Est. \$6.00
56. EVARO, 1908, VF red Doane Ty2 on PPC. (1905-53). Est. \$8.
57. LOGAN, 1907, VF Doane Ty2 on UX18. (1891-60). Est. \$8.
58. MARYSVILLE, 1894, Exc. purple cds w/lt. star-in-circ. killer on VF cover. Most attractive. Est. \$25.00
59. PAXTON, 1916, VF 4-bar on PPC. (1909-38). Est. \$8.
60. SAINT MARY, 1914, VF red viol. 4-bar on real photo card of lake & Sun Camp @ Glacier. PO operated btwn. 1898-1915, but only for 4 1/2 yrs. Est. \$30.
61. ST XAVIER, 1900, VF green cds on U362. Est. \$8.00

MONTANA (continued)

62. STEARNS, 1910, F-VF 4-bar on PPC. (1891-21). Est. \$10.
63. VALENTINE, 1922, F-VF 4-bar on U429. (1903-43). Est. \$8.
64. WACO, 1907, VF 4-bar on PPC. (1907-18). Est. \$25.00
65. WILLOW CREEK/MONT./A.J. WOODWARD, P.M., 1890, Fine lt. purple cds. on cover. Est. \$20.00

NEVADA

66. ARDEN, 1921, VF purple 4-bar on PPC. (1907-71). Est. \$8.
67. BEOWANE, 1907, Exc. duplex on PPC. Est. \$4.00
68. BLAIR, 1907?, VF 4-bar on PPC. (1906-16). Est. \$25.00
69. CHERRY CREEK, 1909, VF 4-bar on U406. Est. \$5.00
70. EMPIRE, 1908, F-VF 4-bar on PPC overstruck by light Carson City flag. Empire (1895-1912). Est. \$10.00
71. GOLD HILL, 1912, VF 4-bar on Va. City scene PPC. Est. \$10
72. HAMILTON, 1911, VF 4-bar on PPC. (1868-31). Est. \$10.
73. LOVELOCKS, 1910, F-VF duplex on PPC. (1875-22). Est. \$10.
74. MAZUMA, 1907, F-VF 4-bar as rcv. mk. on PPC from Canada. Tough PO (1907-12). Est. \$15.00
75. MILLETT, 1907, Exc. Doane Ty3 on PPC. (1906-30). Est. \$15.

NEW MEXICO

76. CERRILLOS, 1910, Ty9 F-VF on PPC. Est. \$5.00
77. FORT BAYARD, 1910, Ty13, F-VF duplex on PPC. Est. \$8.
78. FORT WINGATE, 1911, Ty15, VF 4-bar on real photo PPC of soldier & dog. Est. \$10.00
79. LUMBERTON, 1911, VF unlst. 4-bar on PPC. Est. \$25.00
80. MCINTOSH, 1908, Ty1, F-VF Doane Ty3 on PPC. Est. \$10.
81. ORGAN, 1911, Ty6, VF 4-bar on PPC. Est. \$15.00
82. WANETTE, 1912 (Oct 31), F-VF 4-bar on PPC. (1910-16) Scarce Union Co. PO. Est. \$25.00

NORTH DAKOTA

83. EASBY, 1910, VF light green cds on PPC, DPO. Est. \$5.
84. HALEY, 1908, VF Doane Ty2 on PPC, DPO. Est. \$5.00
85. NORTH CHAUTAUQUA, 1910, VF Doane Ty3 on PPC, DPO. Est. \$12
86. PHOENIX, 1908, F-VF Doane Ty2 on PPC, DPO. Est. \$10.
87. RUDSER, 1909, F-VF Doane Ty3 on PPC, DPO. Est. \$8.00
88. SHERWOOD, 1909, VF Doane Ty2 on PPC. Est. \$5.00

OKLAHOMA TERRITORY

89. ALVA, 1901, VF duplex on VF cvr. Est. \$8.00
90. GUYMON, 1907, F-VF duplex on PPC. Est. \$6.00
91. KELTNER, 1907, VF Doane Ty3 on PPC, DPO. Est. \$15.00
92. OMEGA, 1899, F-VF cds on U367. Est. \$10.00
93. WINNVIEW, 1900, F-VF cds on U367. DPO. Est. \$15.00

OREGON

94. FORT KLAMATH, 1910, F 4-bar on PPC. Est. \$3.00
95. MEADOW, 1915, F-VF 4-bar on PPC. (1910-19). Est. \$10.
96. ROWE, 1909, VF 4-bar on PPC. (1909-17). Est. \$8.00
97. SAMPSON, 1911, VF Doane Ty3 on PPC. (1898-12). Est. \$8.00
98. YANKTON, 1911, F-VF 4-bar on PPC. (1894-31). Est. \$5.

UTAH

99. MARRS, 1913, VF 4-bar on PPC. Rare PO (1910-13). Est. \$30
100. MOUNDS, 1911, VF 4-bar on PPC. (1910-45). Est. \$8.00
101. PETERSON, 1908, VF 4-bar on PPC. (1871-39). Est. \$8.00
102. SCIPPIO, 1911, VF Doane Ty2 on PPC. (1866-65). Est. \$4.00
103. TAFT, 1914, Exc. purple 4-bar on PPC. (1909-15). Est. \$15.

WASHINGTON

104. CORASSET, 1914, F-VF 4-bar on PPC. (1909-16). Est. \$15.
105. DUNLAP, 1907, VF cds on PPC. (1894-11). Est. \$10.00
106. FORT WARD, 1915, VF 4-bar on PPC. (1903-20). Est. \$8.00
107. HELLGATE, 1939, VF 4-bar on UX27. (1927-40). Est. \$6.00
108. MESKILL, 1911, VF Doane Ty 3 on PPC. (1905-20). Est. \$8.
109. MOAB, 1909, F cds struck twice on PPC (1902-29). Est. \$8.
110. WELLPINIT, 1906, F-VF cds on PPC. (1901-18). Est. \$10

WYOMING

111. ALMY, 1911, VF 4-bar on PPC. (1872-1914). Est. \$25.
112. BIGTRAILS, 1910, F-VF cds on PPC. (1898-42). Est. \$10.
113. CLIFTON, 1910, Exc. red violet 4-bar on PPC. (1907-1947). Est. \$15.00
114. FOUR CORNERS, VF 4-bar on UX27, 1922, (1916-63). Est. \$5.
115. GERMANIA, 1913, F-VF 4-bar on PPC. (1899-18). Est. \$20.
116. KIRBY, 1908, VF 4-bar on PPC. (1907-66). Est. \$5.00
117. LUTHER, 1907, Exc. 4-bar on PPC. (1907-10). Est. \$25.
118. MARSHALL, 1912, VF 4-bar on PPC. (1902-44). Est. \$10.
119. SUNRISE, 1909, Exc. duplex on PPC. (1884-67). Est. \$5.00
120. VIOLA, 1909, F-VF 4-bar on PPC. (1896-35). Est. \$15.

All lots sold to highest bidder at a slight advance over second high bid. Minimum bid is \$2.00. Buyers pay mailing costs (1st Class under \$50; Insured over \$50) unless insurance is requested. Improperly described lots may be returned within 10 days.

CLOSING DATE: January 30, 1983.

(503) 246-5246

EDITOR'S COMMENTS

This issue concludes our current volume and marks the second number under our new advertising policy and revised format. In spite of the horrible printing quality of our last number, for which I accept complete responsibility and once again apologize for the inconvenience, comments received have tended to be favorable regarding the move to include advertising. A few readers have expressed regret at losing the entirely non-commercial aspect of LA POSTA, and, while I am sympathetic to their viewpoint, the decision to include advertising was an absolute necessity in order to keep LA POSTA publishing.

Here are the facts. After 12 years of regular, and occasionally irregular, publication LA POSTA had 160 subscribers, some 75 of whom were Sustaining Subscribers. The 160 were very loyal subscribers; most had been receiving LA POSTA for eight or more years. LA POSTA rarely lost subscribers, but, unfortunately, it seldom gained more than four or five new subscribers in a year. Financially, the journal simply could not pay for itself, and, as long as I was employed full time elsewhere, that was of no great concern.

This past summer, as many readers already know, I decided to leave my teaching post and try to build a viable postal history publishing business. LA POSTA is seen as an important element in this scheme, but in order for it to survive the journal must achieve some level of financial success. Advertising, both within our pages and about our journal, appears to be the key to LA POSTA's survival. Thus far, we have gained nearly 80 new subscribers in the past two months, and the number is still increasing. This issue is being mailed to nearly 500 postal history enthusiasts. Auctions included in the last number report active bidding for most lots, and are encouraged by this early success. Right now, I am optimistic about the future of LA POSTA. There is no thought of turning our journal into a slick, commercial publication, with nothing but pages and pages of ads, but, if we can increase subscriptions to about 500, and add some additional revenue from advertisers, WE WILL SURVIVE.

LA POSTA welcomes a new author to our pages this time. Tim Boardman has

crafted an interesting and useful county sketch of Klickitat County, Washington. Washington is one of the states we have slighted over the years, and it is most encouraging to note an increased interest among collectors in the postal history of the Evergreen State.

Several readers have contacted me in recent months concerning projects they have underway or in the formative stages. Idaho, Dakota Territory and Texas have been mentioned as subjects of research, and, while it is too early to offer specific details, more will certainly be forthcoming as work progresses or assistance is requested.

North Dakota appears to be heating up -- at least figuratively -- as a focus of postal history activity. Alan Patera reports that The Depot will soon be publishing a North Dakota post office listing along the lines of their earlier work, and rumor has it that a group of North Dakota postal historians is about to form and begin publication of a journal. Details will be passed along as they become known.

The Alaskan Philatelist resumes publication, and has been included with this issue of LA POSTA. Rather than make TAP an integral part of LA POSTA, even temporarily, it was decided to run an extra large number of copies and mail it with LA POSTA. This procedure will be followed for at least one more issue, and then, hopefully, The Alaskan Philatelist will once again fly with its own wings.

LA POSTA needs research articles! We are being supported most heavily at the moment on the pens of Meschter and Whittlesey. These two fine gentlemen have contributed their talents most abundantly over the past several years, and we have all benefited from their efforts. Please consider joining them and our other illustrious authors in writing a LA POSTA piece. Colorado, Nevada, Montana, Idaho, Arizona and other states of the West are actively collected and studied by many of you I know personally. Published research on these areas is eagerly sought by new collectors, as well as, the seasoned veterans. Let's work together to bring Western postal history to a higher plane of enjoyment and understanding.

Richard W. Helbock, Editor.

