

# LA POSTA



Life at the placer mines

**vol. 10 no. 5**





# LA POSTA

October 1979

VOLUME 10, NUMBER 5 WHOLE NUMBER 59

## SUSTAINING SUBSCRIBERS

Americana Stamps  
James G. Baird  
William H. Bauer  
Anna Bushue  
George Cheren  
Sheldon H. Dike  
Robert P. Doddridge  
Robert J. Drake  
Raymond Epple  
Charles G. Finke  
Inez C. Ford  
E. B. T. Glass  
Bernard Griffin  
H and H Marketing  
John Henry  
Marion Herlihy  
William P. Hoffman  
James T. R. Johnson  
Frank J. Kosik  
Owen H. Kriege  
Clarín A. Lewis  
Richard Lis  
Howard Mader  
Dennis J. Lutz  
Wallace G. McDonald  
William T. McGreer  
Daniel Y. Meschter

Stephen F. Miles  
Robert F. Miller  
Donald L. Morisch  
Charles F. Nettleship, Jr.  
Lawrence W. Pawley  
N. Leonard Persson  
Ernest S. Peyton  
Robert Potts  
Richard H. Poultridg  
James H. Raley  
William F. Rapp, Jr.  
Joseph F. Rorke  
Arthur E. Rupert  
Fred F. Seifert  
Daniel R. Siegle  
Donald T. Smith  
Jack E. Stucky  
Ted Teichgraber  
Glenn F. Terry  
Charles L. Towle  
Western Postal History Museum  
William H. White  
Charles A. Whittlesey  
Milton G. Wicker  
John H. Willard  
John H. Williams

## IN THIS ISSUE:

	Page
THE DOANE NUMERAL CANCELLATIONS AS KNOWN USED IN NEVADA By Edith R. Doane . . . . .	2
NINETEENTH CENTURY OREGON POSTMARKS: UNION COUNTY [Part XV, 19th CENTURY OREGON POSTMARK CATALOG] By Charles A. Whittlesey . . . . .	5
ALASKAN POST OFFICES, 1900-1911 By Richard W. Helbock . . . . .	9
NEW MEXICO POST OFFICES, Part VIII: SOCORPO COUNTY By Richard W. Helbock with Ruth Dolezal . . . . .	17

# THE DOANE NUMERAL CANCELLATIONS AS KNOWN USED IN NEVADA

By Edith R. Doane

Nevada had its communication problems during its early statehood due to so few possible through roads because of mountains and rivers. The greatest concentration of people and post offices was in Elko County in the Northeast and in Churchill, Esmeralda, Washoe and White Pine counties in the West.

The only Doane Numeral Cancellation marking known so far in Type 1 is for FALLON in the western county of Churchill. It is dated Jan. 3, 1905, as illustrated below. On the other hand, my earliest recorded Doane marking in Nevada is for HARRIMAN in Washoe County. It is a Type 2 and is dated Jan. 21, 1904. Many others followed in Type 2 markings in 1904 and 1905 as you will see from the individual listings that follow. The latest Doane marking known so far is for ALAMO in the southeastern county of Lincoln. It is dated Oct. 8, 1912.

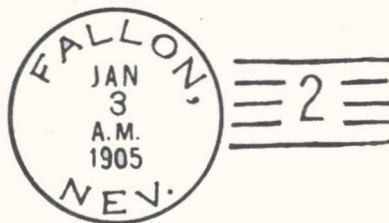
The highest numeral recorded to date in the bars is "15" in Type 3 at SPARKS in the western county of Washoe. The next highest is "7" at HAWTHORNE in Esmeralda County between 1905 and 1909. The next is "6" at HAZEN in Churchill County in 1907, and then "5" at VERDI in Washoe County during 1906. All others presently listed in the three types have numerals between "1" and "4".

If you are in doubt as to the correct Typing of a marking, because the bars are mostly missing, measure the diameter of the postmark section for guidance. That for Type 1 and for Type 2 is always below 30mm., whereas that for Type 3 is always above that amount.

## Type 1 Known Used in Nevada

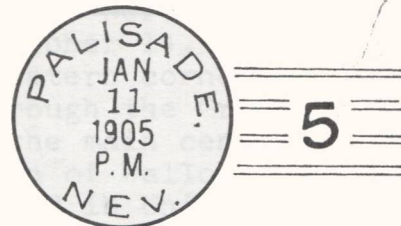
The number is presently very small; just one.

Name of P.O., County, Location	# in Bars	Earliest	Latest
FALLON, Churchill, W	2	Jan 3 05	



Type 2 Known Used in Nevada

NAME OF P.O., COUNTY, LOCATION	# IN BARS	EARLIEST	LATEST
ACOMA, Lincoln, NE	1	Apr 17 06	
AMOS, Humboldt, NW	2	Aug 11 05	
ARTHUR, Elko, NE	2	Jun 2 05	Oct 5 08
BAUVARD, Elko, NE	1	Nov 11 06	
BLAINE, Elko, NE	1	Sep 14 04	
CARLIN, Elko, NE	1	Oct 15 06	
CHARLESTON, Elko, NE	1	Dec 19 04	Mar 17 08
COLUMBIA, Esmeralda, SW	1	Jan 29 05	
EDGEMONT, Elko, NE	4		Aug 24 12
FITTING, Humboldt, NW	1	Jan 29 09	
FORT CHURCHILL, Lyon, W	1	m	
GOLD CREEK, Elko, NE	2		Aug 13 11
HARRIMAN, Washoe, W	1	Jan 21 04	
HAWTHORNE, Esmeralda, SW	7	May 17 05	May 23 09
ILLIPAH, White Pine, E	m	Nov 29 06	
LUND, White Pine, E	2	Aug 2 09	
MARBLE, Nye, S	1		Dec 31 10
MILLERS, Esmeralda, SW	1	Jul 29 09	
OVEPTON, Lincoln, SE	2	Nov 11 09	
PALISADE, Eureka, C	5	Jan 11 05	Feb 21 08
RYOLITE, Nye, S	1	Aug 11 06	
SAINT CLAIR, Churchill, W	2	Feb 11 07	
SPARKS, Washoe, W	m	Oct 7 05	
STEPTOE, White Pine, E	1	Dec 21 08	
SUTRO, Lyon, W	1	Feb 13 08	
SWEETWATER, Esmeralda, SW	2	Apr 9 09	
UNIONVILLE, Humboldt, W	1	Mar 6 07	Jun 5 08



### Type 3 Known Used in Nevada

This group is much smaller than that for Type 2, at least so far in our research and with co-operation from others. Here are listed the presently known group.

NAME OF P.O., COUNTY, LOCATION	# IN BARS	EARLIEST	LATEST
ALAMO, Lincoln, SE	1	May 12 05	
AURORA, Esmeralda, SW[G]	1	Dec 21 10[G]	
AURORA, Mineral, ?	m		Oct 23 11
BUCKSKIN, Douglas, W	1	Sep 20 06	Nov 13 07
BUENA VISTA, Esmeralda, SW	1	Sep 20 06	Nov 13 07
GOOD SPRINGS, Clark, S	m		Sep 3 12
HAZEN, Churchill, W	6	Oct 5 07	
LAS VEGAS, Clark, S	1	Oct 4 07	
LIDA, Esmeralda, SW[P]	2	Jul 15 08[P]	
LIDA, Mineral, SE	m		May 18 12
MOAPA, Lincoln, SE	4	May 6 07	Dec 31 08
OLINHOUSE, Washoe, W	1	Jul 1 07	
PINEGROVE, Esmeralda, SW	2		Oct 4 10
SMITH, Lyon, W	2	Apr 20 07	Dec 16 09
SPARKS, Washoe, W	15	Oct 7 05	May 26 08
TIPPETT, White Pine, E[G]	3		Aug 10 09[G]
VERDI, Washoe, W	5	Nov 23 06	

[G] - Sample marking loaned by Ted Gruber for illustration

[P] - Sample marking loaned by Ernest Peyton for illustration



After.....days, return to

SPARKS, NEV.



*Mrs. Geo. W. Clinton*

*512 Mill Street,*

*Reno.*

Sparks, Nevada May 26, 1908 #15

More detailed notes are needed about the use of the Doane Numeral Cancellations in Arizona. All assistance will be appreciated.

-----

NINETEENTH CENTURY OREGON POSTMARKS: UNION COUNTY  
[Part XV, 19th CENTURY OREGON POSTMARK CATALOG]

By Charles A. Whittlesey

Union County was created from the northern portion of Baker County by the Oregon State Legislature on October 14, 1864. The county originally took in the entire northeastern corner of Oregon, but most of the population was scattered through the Grande Ronde Valley with La Grande and Union serving as the main centers. In 1887 Union County was reduced by the creation of Wallowa County.

A total of 26 post office names were used in Union County during the 19th century [See LA POSTA, Vol. 2, No. 5, pp. 5-15]. Of this number only 11 have thus far been documented through postmarks dating from before 1900. Known postmarks of these 11 Union County offices are listed below.



# UNION COUNTY NINETEENTH CENTURY POSTMARKS

TOWN TYPE NO.	POSTMARK CODE	EARLIEST DATE	LATEST DATE	EXAMPLES KNOWN	KILLER TYPE*	NOTES
COVE (1868-Date)						
1.	C1EA1BBR24	10Jun73?		1	Target	
2.	C1EA1BBR26	12Aug82b		1	Target	
3.	C21J3N1B27.5	16Jul84b	29Apr89r	3	Pound grid	
4.	C1EN1BBR27	24Oct88	6Oct92	2	Target	
5.	C1ET1B28	21Oct98		1	Cork	
ELGIN (1885-Date)						
1.	C1EN1BBR27.5	29Aug89		1	Cork	
2.	C1JS1B32.5	14Sep92p		1	Star	
3.	C1ET1B28	30Nov97	20Jan02	2	Cork	
HILGARD (1883-1943)						
1.	PART.OVAL	1Sep99v		1		
ISLAND CITY (1873-1959)						
1.	OV21E1S1RRB37x23	28May84	10Nov85		Target	
2.	OV41J11S1RRB47x27	22Jan90	26Jan94	5	Target	
KEMELA (1887-1949)						
1.	C1EN1BBR27.5	6Feb99		1	Cork	
LA GRANDE (1863-Date)						
1.	M	8Jul64		1		[1]
2.	C1C1A1BBR24.5	70	29May77	10	Target/Cork	[1]
3.	OC1EN1BBR25.5	25Oct79		1		
4.	C1EN1BBR27	13Mar86		1	Cork	
5.	Reg	1Aug87r		1		
6.	C1EN1B27	26Apr91	23Apr92	2	Cork	
7.	C1EN1B28	27Oct92		1		
8.	C1JT1B28	30Apr94		1	Star-in-circle	
9.	C1ET1B28	22Jan98		1	Cork	
MEDICAL SPRINGS (1887-Date)						
1.	C1EN1BBR27.5	12Mar89	27Aug90	2	Target	
2.	C1EN1BBR28	2Dec97	7May00	2	Target	
NORTH POWDER (1876-Date)						
1.	C1JS1RRB31	14Sep87p	26Mar89p	2		[2]
2.	C1ET1B27.5	29Jun90				[3]
3.	C1ET1B28	24Nov97	99	2	Cork	



1



3



2



3



1



1



2



2



3

REGISTERED  
AUG 1 1887  
LA GRANDE, OREGON.

5



9



1



1



1



1



2



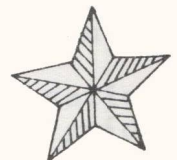
3



4



5



6



7



# UNION COUNTY NINETEENTH CENTURY POSTMARKS

TOWN TYPE NO.	POSTMARK CODE	EARLIEST DATE	LATEST DATE	EXAMPLES KNOWN	KILLER TYPE	NOTES
SUMMERVILLE (1865-Date)						
1.	C1EA1BBR25	28Jun79b	24Oct79b		Target	
2.	C1EN1BBR27.5	10Oct88		1	Target	
3.	C1ET1B27.5	4Nov95		1	Cork	
4.	C1ET1B29	22Jul98		1	Cork	
TELOCASET (1885-Date)						
1.	C1ES1B32	30Aug91p			Ov.bar grid	
UNION (1863-Date)						
1.	C1EA1BBR24.5	70	27Aug74		Target	
2.	C1EA1BBR25	26Oct74	20Jun79		Target	
3.	C21JS1B29	17Feb80	3Nov83	3	Target	
4.	C21J13S1RBB29	6Apr86		1	Target	
5.	C21JS1B32	28Feb87	27Sep90	5	Wheel-of-fort.[4]	
6.	C1ES1B29	6Feb92r			Ov.bar grid	
7.	C1EN1B26.5	26May93	7Jun94	3	Cork	
8.	C1JT1B27.5	16Aug95		1	Cork	
9.	C1ET1B28	26Sep96	26Aug99	2	Cork	

NOTES: [1] Office name spelled "LA GRAND."  
 [2] No year date in device.  
 [3] Receiving device used as postmark of origin.  
 [4] Most examples have wheel-of-fortune killer;  
 a Weinhard "special."

Color abbreviations: b-blue  
 p-purple  
 r-red  
 v-violet

## ALASKAN POST OFFICES, 1900-1911

By Richard W. Helbock

The first decade of the twentieth century brought little change in the total numbers of people living in Alaska. The Census of 1910 enumerated 64,356 Alaskan residents, only 764 more than the number living in the state in 1900. Meanwhile, the number of Alaskan post offices had experienced a drastic increase from the 45 offices existing in 1899 to a total of 136 operating in the Territory in 1911. An explanation of these seemingly contradictory statistics may be traced to two primary considerations. First, the number of post offices at the end of the 19th century was grossly inadequate for the number of residents, many of whom were recent arrivals to the mining districts. Second, although the mining booms had died out by 1911 in many of the earlier sites, several new areas had recently been discovered accounting for a considerable redistribution of people within the Territory. The combined effect of these factors upon the postal operations in Alaska during the first decade of the 20th century created a large number of very short-lived post offices. Collecting examples of the postmarks from these early 20th century offices represents an extremely challenging task for the Alaska postal history buff, and thus far our combined efforts have fallen somewhat short.

The table which follows lists 192 different post offices which are believed to have operated in Alaska between 1900 and 1911. Postmarks have been documented from all but 45 of these offices during the same period. In some cases earlier postmarks from an office are known, e.g., Mary Island, but no 1900-1911 postmarks have been reported. More typically, later postmarks are known from an office, e.g., Diamond, Dillingham, but none have been recorded earlier than 1912. Looking through the list one can not help but be surprised by some of the offices which are represented. Ephemeral offices such as Aurora, Baldwin, Clarence, Engineer, Iliamna and Kiam have been documented by an existing postmark in the hands of collectors. On the other hand, fairly busy offices such as Bethel, Funter, Kennecott and Nenana have not yet been "discovered" in the pre-1912 period.

Aside from simply being a record of postmaster compensation and postmark documentation, the table may also be a useful guide for collectors seeking the "missing" offices. The type of postmark used by an office during this period depends upon the size, or volume of business, of the office and the year in which the office began to function. Since all of the larger Alaskan post offices of this period have been documented, we can disregard the first factor and concentrate only on the second. If a post office is shown as operating in the 1900-01 or 1902-03 columns, it is a fairly safe assumption that the office used a steel hand-cancel measuring either 28 or 27.5 millimeters. Lettering of the office name and "ALASKA" would be block style, but the date could be either Roman or block depending upon whether the postmark

had been introduced prior to 1897. Almost all offices established between 1900 and 1903 were issued these steel hand postmarking devices. The known exception among the small Alaskan offices is Tonka, which used a straight line marking.

Post offices listed in the 1904-05 column for the first time were probably assigned Doane Type 2 postmarker/cancellers. Afognak, Catalla and Fairbanks represent examples of these offices, and a more complete discussion of this subject was presented in LA POSTA, Vol. 7, No. 2, pp. 6-9. Similarly, offices established in 1906, and appearing for the first time in the 1906-07 column, were typically issued the Doane Type 3 device.

The first four-bar devices began appearing at post offices established in 1907 (or late 1906). Berry, Eldorado, Hot Springs and Tyee are examples of Alaskan offices receiving four bar postmarkers with close-set bars. A slightly revised design came into use in 1909, having close-set bars which were longer than the 1907 type, and a much bolder print style.

Post offices established at the end of the decade were issued a four-bar postmarker with wide-set bars. Chitina, Dan Creek, and Iditarod are examples of offices receiving this type of device in Alaska.

Based upon the foregoing discussion, here are my predictions as to the types of postmarks to be expected for the 1900-1911 era for the missing offices:

Steel Handcancel	Doane Ty 2	Doane Ty 3	Four-bar 1907 Type	Four bar 1909 Type
Cape Fanshaw	Dillingham	Bethel	Baranoff	Chandalar
Eaton	Nizina	Davidson	Clacier	Eureka
Funter	Shungnak	Diamond	Innoko	Kaltag
Safety	Tolovana	Dutton	Kennecott	Kemperville
Saxman	Windham	Gypsum	Klinquan	Park
Sealevel		Howkan	Kokrines	Pirate Cove
Snettisham			McKinley	Sanak
Spooner			Midnight	Tigara
Star			Sanitarium	
Tyoonok			Steel Creek	
			Taylor	
			Vault	

A few additional provisional and manuscript postmarks may also be expected from this group. Fox, Iditarod and Ophir all used straight line provisional markings briefly, and perhaps we may look forward to others. The Richardson postmaster used a manuscript marking in 1908, as did the Flat postmaster in 1914, so we might find other manuscripts among this group of missing offices.

The table which follows is accompanied by two maps showing the distribution by size of Alaskan post offices in 1901 and 1907. Particularly evident on the 1907 map is the expansion of postal facilities to interior Alaska, especially in the Fairbanks area.



ALASKA POSTMASTER COMPENSATION, 1900-1911  
(dollars to nearest whole dollar)

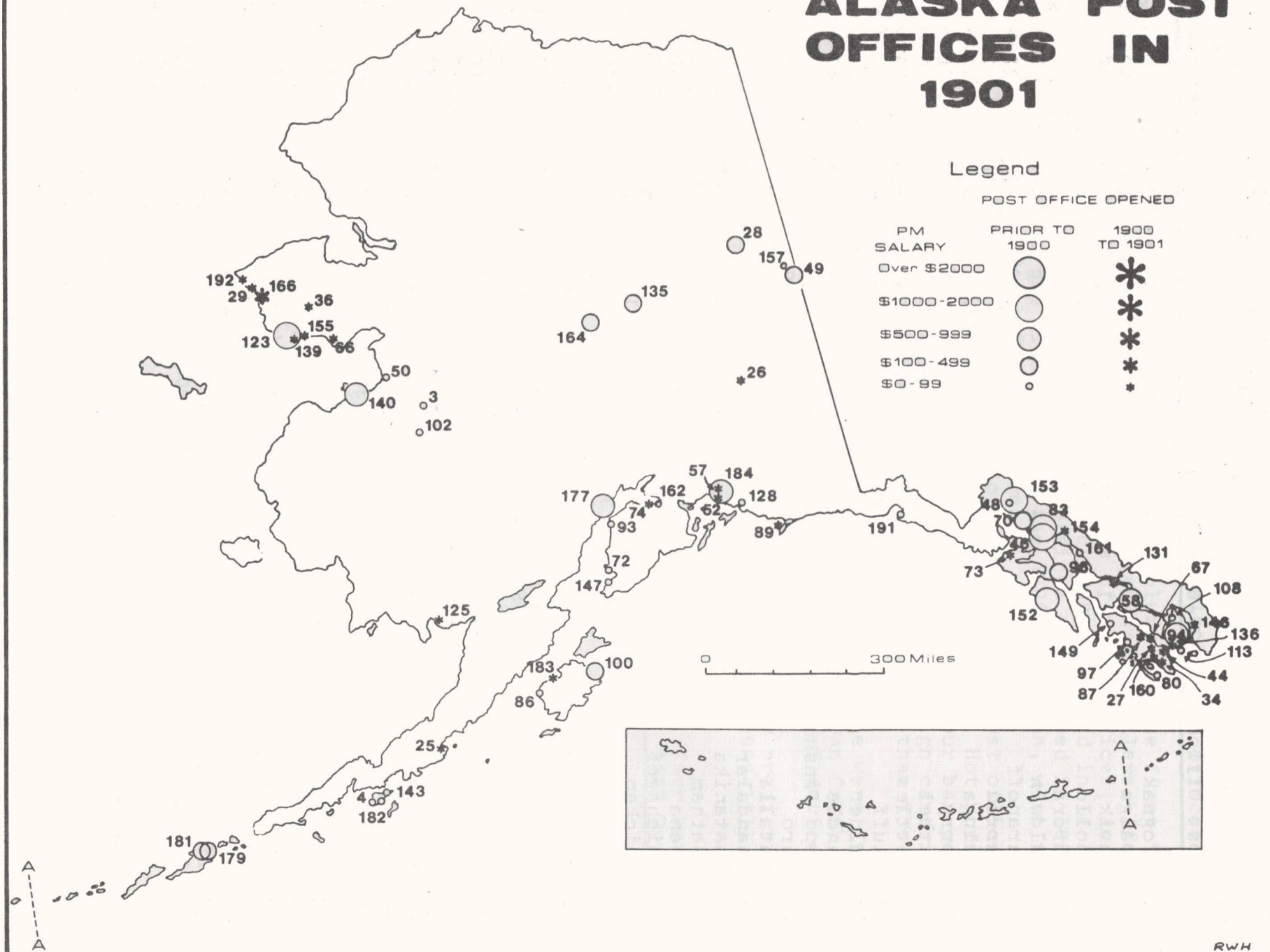
Map No.	Post Office	1900-01	1902-03	1904-05	1906-07	1908-09	1910-11	PM*
1	Afognak	-	-	24	49	116	70	x
2	Amalga	-	-	-	80	101	40	x
3	Anvik	21	31	45	55	94	100	x
4	Apollo	51	67	106	-	-	-	x
5	Aurora	-	5	-	-	-	-	x
6	Baldwin	-	-	-	0	-	-	x
7	Baranoff	-	-	-	0	11	20	
8	Barrow	-	10	9	9	33	2	x
9	Beluga	-	-	-	-	-	40	x
10	Berry	-	-	-	60	213	50	x
11	Bethel	-	-	-	50	109	40	
12	Bettles	-	21	49	49	113	70	x
13	Bluff	-	41	31	34	-	-	x
14	Calder	-	-	-	27	86	10	x
15	Candle	-	44	67	67	215	440	x
16	Cape Fanshaw	-	13	-	-	-	-	
17	Caro	-	-	-	9	13	10	x
18	Catalla	-	-	144	-	-	-	x
19	Chandalar	-	-	-	-	23	-	
20	Chatanika	-	-	-	-	268	-	x
21	Chatham	-	-	-	28	54	200	x
22	Chena	-	-	176	303	252	160	x
23	Chichagof	-	-	-	-	-	140	x
24	Chicken	-	-	63	128	114	120	x
25	Chignik	0	33	70	01	60	190	x
26	Chisna	0	23	21	35	-	-	x
27	Chomlev	17	20	20	27	23	90	x
28	Circle	241	192	182	253	207	290	x
29	Clarence	5	-	-	-	-	-	x
30	Cleary	-	-	-	979	400	140	x
31	Coal Harbor	-	8	29	30	6	10	x
32	Coldfoot	-	0	47	46	149	10	x
33	Copper Center	-	76	207	205	267	80	x
34	Coppermount	7	45	143	139	-	-	x
35	Cordova	-	-	-	-	0	1100	x
36	Council	73	206	439	367	391	200	x
37	Dahl	-	-	-	35	50	90	x
38	Deadwood	-	-	-	-	50	100	x
39	Davidson	-	-	-	0	-	-	
40	Deering	-	18	150	149	65	10	x
41	Dempsey	-	-	-	-	26	40	x
42	Diamond	-	-	-	-	-	-	
43	Dillingham	-	-	-	-	-	-	
44	Dolomi	54	92	107	108	82	60	x
45	Done	-	-	-	0	175	180	x
46	Douglas	1000	1200	1300	1300	1300	1300	x
47	Dutton	-	-	-	13	-	-	
48	Dyea	75	-	-	-	-	-	x
49	Eagle	264	352	485	550	629	430	x
50	Eaton	17	-	-	-	-	-	

# ALASKA POST OFFICES IN 1901

## Legend

POST OFFICE OPENED

PM SALARY	PRIOR TO 1900	1900 TO 1901
Over \$2000	●	*
\$1000-2000	●	*
\$500-999	●	*
\$100-499	○	*
\$0-99	○	*



Map

No.	Post Office	1900-01	1902-03	1904-05	1906-07	1908-09	1910-11	PM*
51	Eldorado	-	-	-	0	44	-	x
52	Ellamar	16	76	130	190	89	100	x
53	Elliott Creek	-	-	-	-	0	-	x
54	Engineer	-	-	-	-	0	4	x
55	Eureka	-	-	-	-	-	80	
56	Fairbanks	-	0	1000	2100	2600	2200	x
57	Fort Liscum	74	123	285	144	310	270	x
58	Fort Wrangel	672	-	-	-	-	-	x
59	Fort Yukon	-	84	7	78	104	230	x
60	Fox	-	-	-	-	350	280	x
61	Franklin	-	0	24	47	44	90	x
62	Funter	-	10	28	48	51	160	
63	Gakona	-	-	-	150	87	-	x
64	Gilmore	-	-	-	28	94	-	x
65	Glacier	-	-	-	0	-	-	
66	Golovin	34	56	15	-	15	20	x
67	Grindall	15	27	-	-	-	-	x
68	Gulkana	-	-	-	-	0	180	x
69	Gypsum	-	-	-	13	40	50	
70	Haines	300	351	597	662	826	1000	x
71	Hollis	-	138	68	47	33	20	x
72	Homer	72	43	40	-	18	20	x
73	Hoonah	3	76	76	129	114	90	x
74	Hope	8	50	129	129	40	70	x
75	Hot Springs	-	-	-	0	336	190	x
76	Howkan.	-	-	-	65	70	80	
77	Igloo	-	13	28	28	-	-	x
78	Iliamna	-	-	-	-	-	-	x
79	Innoko	-	-	-	-	44	40	
80	Jackson	84	47	61	-	-	-	x
81	Jackwade	-	75	41	97	37	80	x
82	Jualin	-	12	21	15	1	-	x
83	Juneau	1500	1600	1600	1700	1700	1800	x
84	Kake	-	-	41	66	46	80	x
85	Kaltag	-	-	-	-	0	80	
86	Karluk	89	77	83	-	-	-	x
87	Kasaan	57	180	96	-	57	200	x
88	Katalla	-	-	-	208	423	430	x
89	Kayak	4	87	236	-	-	-	x
90	Keewalik	-	10	-	0	-	-	x
91	Kemperville	-	-	-	-	-	-	
92	Kennecott	-	-	-	-	50	270	
93	Kenai	22	76	74	70	113	180	x
94	Ketchikan	799	1000	1200	1600	1600	1600	x
95	Kiam	-	-	-	0	-	-	x
96	Killisnoo	100	129	174	147	153	230	x
97	Klawock	19	43	71	82	117	170	x
98	Klinquan	-	-	-	0	-	-	
99	Knik	-	-	0	57	83	150	x
100	Kodiak	192	217	220	500	313	310	x



## Map

No.	Post Office	1900-01	1902-03	1904-05	1906-07	1908-09	1910-11	P**
101	Kokrines	-	-	-	45	129	100	
102	Koserefsky	50	223	141	220	168	150	x
103	Kotsina	-	-	-	-	9	40	x
104	Kotzebue	-	-	138	138	59	70	x
105	Koyukuk	-	-	-	-	-	-	x
106	Landlock	-	-	-	0	52	-	x
107	Latouche	-	-	0	163	212	270	x
108	Loring	30	169	166	153	139	190	x
109	Mary Island	-	-	-	-	-	-	
110	Mastodon	-	22	159	-	-	-	x
111	McKinley	-	-	-	-	0	-	
112	Meehan	-	-	-	74	185	0	x
113	Metlakahtla	52	41	-	-	-	-	x
114	Metlakatla	-	-	100	80	175	130	x
115	Midknight	-	-	-	-	-	-	
116	Midnight	-	-	-	-	10	10	
117	Miller House	-	-	-	-	42	70	x
118	Nation	-	-	-	-	50	30	x
119	Nenana	-	-	-	-	6	200	
120	Niblack	-	7	92	19	-	-	x
121	Nizina	-	-	0	0	0	110	
122	Nolan	-	-	-	-	-	80	x
123	Nome	1700	1800	1800	2000	2200	2100	x
124	Nulato	-	96	91	91	84	140	x
125	Nushagak	29	0	146	146	151	470	x
126	Olness	-	-	-	-	54	-	x
127	Ophir	-	-	-	-	0	190	x
128	Orca	76	80	101	100	-	-	x
129	Park	-	-	-	-	0	-	
130	Peavey	-	-	-	-	-	-	
131	Petersburg	94	135	200	298	430	710	x
132	Pirate Cove	-	-	-	-	-	10	
133	Porcupine	-	209	71	71	113	20	x
134	Quinhagak	-	-	-	55	80	110	x
135	Rampart	223	224	344	296	238	390	x
136	Revilla	39	-	-	-	-	-	x
137	Richardson	-	-	-	0	128	70	x
138	Rodman	-	90	15	-	-	-	x
139	Safety	15	-	-	-	-	-	
140	Saint Michael	593	418	354	600	635	1000	x
141	Salchaket	-	-	-	-	-	60	x
142	Sanak	-	-	-	-	-	10	
143	Sandpoint	31	46	149	61	82	70	x
144	Sanitarium	-	-	-	-	29	70	
145	Saxman	-	-	-	-	-	-	
146	Sealevel	6	105	-	-	-	-	
147	Seldovia	21	56	82	95	158	240	x
148	Seward	-	-	562	1200	1300	1100	x
149	Shakan	40	109	111	113	110	120	x
150	Shelton	-	-	-	-	65	70	x

# ALASKA POST OFFICES IN 1907

## Legend

POST OFFICE OPENED

PM  
SALARY

Over \$2000

\$1000-2000

\$500-999

\$100-499

\$0-99

PRIOR TO  
1905

1905  
TO 1907



0 150 300 MILES



## Map

No.	Post Office	1900-01	1902-03	1904-05	1906-07	1908-09	1910-11	PM*
151	Shungnak	-	-	14	14	12	30	
152	Sitka	677	755	750	802	820	1000	x
153	Skagway	1800	1800	1800	1600	1500	1600	x
154	Snettisham	75	60	33	33	7	10	
155	Solomon	0	9	209	521	136	220	x
156	Spooner	-	0	-	-	-	-	
157	Star	15	-	-	-	-	-	
158	Steel Creek	-	-	-	97	60	50	
159	Sullivan	-	0	-	-	-	-	x
160	Sulzer	0	42	77	137	262	290	x
161	Sumdum	100	95	25	27	34	30	x
162	Sunrise	88	94	136	136	57	40	x
163	Susitna	-	-	-	-	93	200	x
164	Tanana	183	187	361	397	568	940	x
165	Taylor	-	-	-	12	74	70	
166	Teller	108	163	99	134	123	170	x
167	Tenakee	-	3	74	84	89	190	x
168	Tiagara	-	-	-	-	-	10	
169	Tin City	-	-	0	32	-	-	x
170	Toftv	-	-	-	-	0	270	x
171	Tokeen	-	-	-	-	-	120	x
172	Tolovana	-	-	-	33	45	60	
173	Tonka	-	61	-	-	-	-	x
174	Tonsina	-	-	32	32	124	90	x
175	Treadwell	-	480	616	650	1000	1000	x
176	Tyee	-	-	-	-	55	20	x
177	Tyoonok	715	31	20	-	-	-	
178	Tvonok	-	-	-	66	90	-	x
179	Udakta	241	137	102	93	-	-	x
180	Unalakleet	-	29	38	55	70	60	x
181	Unalaska	125	92	122	89	241	70	x
182	Unga	53	56	64	94	140	160	x
183	Uyak	17	30	36	36	64	210	x
184	Valdez	508	974	1200	1500	1600	1700	x
185	Vault	-	-	-	-	98	-	
186	Wales	-	13	51	33	23	20	x
187	Washburn	-	-	-	57	78	60	x
188	Windham	-	-	15	59	36	30	
189	Woedsky	-	59	20	25	-	-	x
190	Wrangell	-	773	812	764	1000	1000	x
191	Yakutat	38	80	91	102	99	120	x
192	York	27	-	-	-	-	-	x

Notes: PM\* column indicates whether or not a postmark is known from this office during the 1900-1911 period. An "x" indicates that such a mark is known.

A dash "-" indicates that the office was not listed in the Official Register in that year.



NEW MEXICO POST OFFICES  
Part VIII: SOCORRO COUNTY

By Richard W. Helbock with Ruth Dolezal

Created by the Territorial Legislature in 1852, Socorro County was once the largest in New Mexico, and has clearly had one of the least stable boundaries. Since its administration by the United States, the borders of the county have been altered 17 times and once the very existence of the county was threatened by legislative action. In the 1850's, Socorro County ran east-west between Texas and California, taking in almost one-quarter of New Mexico and most of southern Arizona. Subsequent subtractions have diminished the county to its present boundaries, while increasing the area of seven other counties. In 1927, the State Legislature attempted to abolish both Socorro and Catron counties in order to create a new Rio Grande County. A court suit voided this act and the two counties remained independent. The city of Socorro has been the county seat since the county was created.

Socorro County's first permanent settlements of record were founded by Piro Indians, the most southerly group of Puebloans, and date from the Thirteenth century. Spanish explorers visited several Piro villages beginning in 1541 when one of Coronado's officers and his men camped near Teypana. Most of the Piro villages were assigned Spanish missionaries during the early 1600's. Several missions were founded including Senecu in 1629 near the present town of San Antonio. Increasing traffic along the Camino Real, which traversed the county along the Rio Grande, attracted bands of raiding Apaches. The Apaches, sometimes operating in concert with the Piros, conducted raids against both travelers and settlements throughout the Spanish and Mexican periods and into the period of American control. The U. S. Army established a network of frontier forts to counter the threat of Apache raids. One such was Fort Conrad on the west bank of the Rio Grande just across from Valverde. In 1854, Fort Conrad was abandoned and its troops relocated nine miles south at the better situated Fort Craig.

In August 1861 southern New Mexico and southern Arizona were proclaimed as the Territory of Arizona in the Confederate States of America. In January 1862 a column of troops under Sibley of Texas marched to fight the Union garrison of Fort Craig in an all-day battle in which the Confederates won. Although later defeated in a battle further to the north and forced to retreat back to Texas, the South had at least briefly asserted its claim over the Territory.

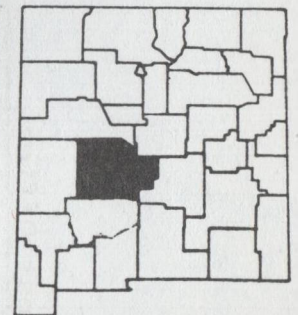
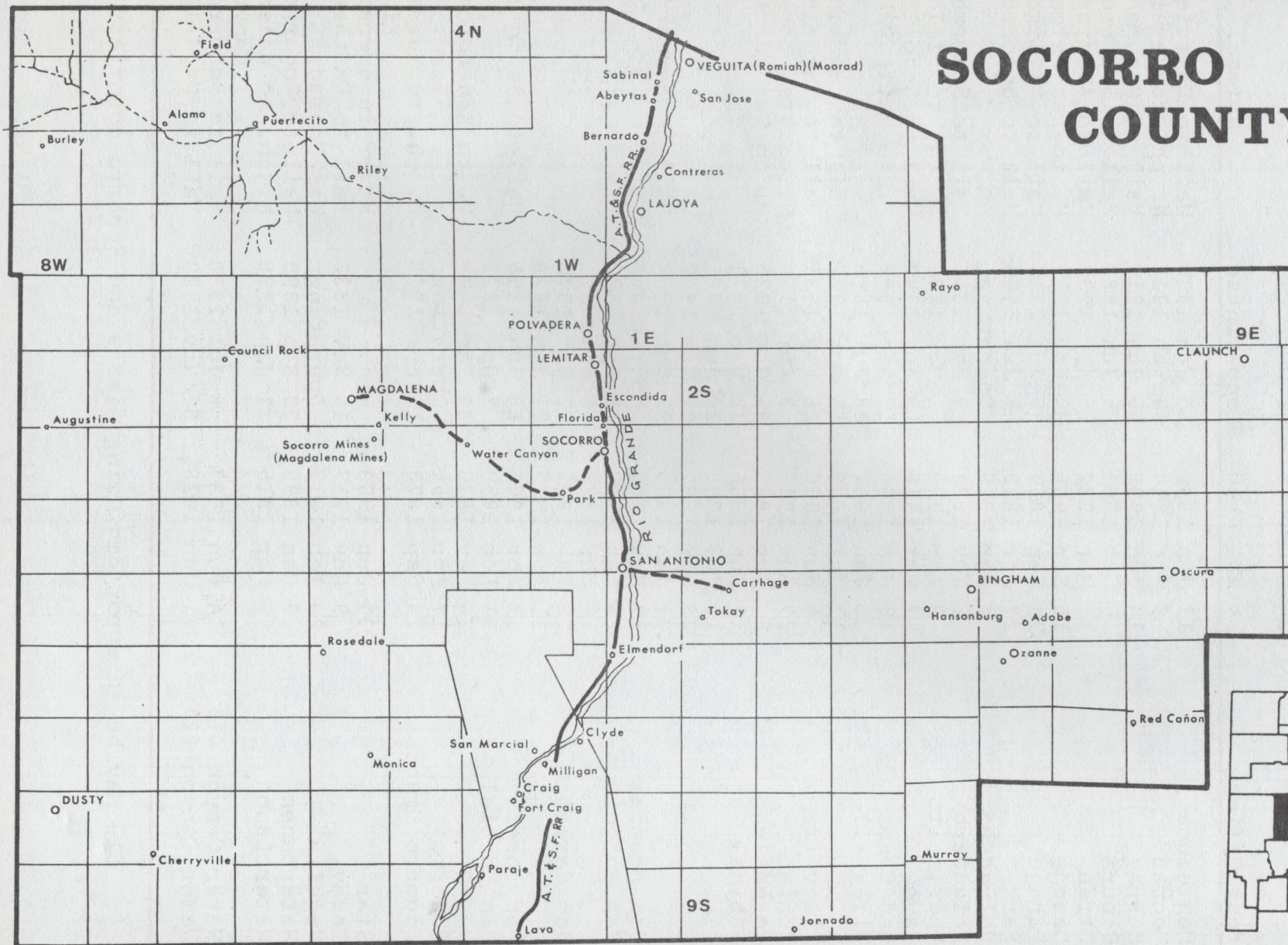
A mining boom brought prosperity to Socorro County following the Civil War. Beginning with the discovery of lead in 1866 and followed closely by silver in 1867, Socorro found itself the center of an extensive mining district by the 1880's. Magdalena and Kelly were the chief boom towns, and the boom lasted until the 1920's. Today stock raising and irrigated farming of valley lands are the main economic activities in Socorro County, but the county is strangely quiet after its earlier decades of intense activity.

# SOCORRO COUNTY POST OFFICES

Post Office	Established	Discontinued	Notes
Abeytas	29 Oct 1918	15 Jul 1945	Mail to Bosque
Adobe	24 May 1933	28 Feb 1938	Mail to Bingham
Alamo Rural Branch		Operating	As Magdalena CPO
American Valley	27 May 1887	11 Oct 1887	Mail to Socorro
Augustine	14 Nov 1927	31 Jul 1955	Mail to Magdalena
Bernardo	31 May 1902	31 May 1919	Mail to Bosque
Bingham	20 Jul 1934	Operating	
Burley	29 Apr 1901	15 Nov 1918	M. to Puertocito
Bursum	23 Mar 1904	30 Sep 1905	Mail to Chloride
Campus Sta.	1 Dec 1949	Operating	Of Socorro
Carthage	20 Sep 1883	12 Aug 1893	
	18 Sep 1906	30 Nov 1950	Mail to Bingham
Cherryville	9 Mar 1881	30 Jul 1886	M. to Monticello
Claunch	14 Feb 1930	Operating	
Clyde	8 Jan 1897	15 Jan 1938	M. to San Marcial
Contreras	14 Apr 1919	31 Mar 1943	Mail to Lajoya
Council Rock	15 Aug 1881	25 May 1883	Mail to Alma
Craig	2 Jul 1880	14 Dec 1885	M. to San Marcial
Deerpoint	29 Sep 1924	1 Jul 1925	Rescinded
Dusty	27 May 1927	30 Apr 1948	
	16 Nov 1950	Operating	
Elmendorf	14 Jul 1906	15 Feb 1918	M. to San Antonio
Escondida	10 Feb 1931	31 Jul 1931	Mail to Socorro
Field	1 Mar 1930	30 Apr 1943	M. to Magdalena
Florida	16 Feb 1950	31 Jul 1955	Mail to Socorro
Fort Craig	22 Mar 1855	26 May 1873	
Fraley	20 Sep 1893	21 Apr 1896	M. to San Antonio
Hansonburg	18 Sep 1906	15 Dec 1910	M. to San Antonio
Jornado	7 Jul 1903	8 Mar 1904	M. to San Marcial
Kelly	15 Feb 1883	31 Jan 1945	M. to Magdalena
La Joya	21 Jun 1871	30 Apr 1873	
	28 Feb 1883	5 Dec 1895	M. ch. to Lajoya
Lajoya	5 Dec 1895	Operating	
Lake Valley	18 Oct 1880	30 Dec 1881	[1]
Lava	21 May 1886	3 May 1898	
	8 Feb 1900	14 Nov 1903	M. to San Marcial
Lemitar	10 Jan 1866	24 Oct 1877	
	6 Jan 1880	1 Jun 1880	
	26 Feb 1883	5 Feb 1886	
	28 Jun 1893	Operating	
Magdalena	16 Dec 1884	Operating	
Magdalena	21 Jun 1880	23 Nov 1883	Mail to Kelly
Magdalena Mines	16 Apr 1878	11 Nov 1878	Was Socorro Mines
Milligan	13 Apr 1907	15 May 1913	M. to San Marcial
Monica	1 Jun 1881	25 May 1883	Mail to Socorro



# SOCORRO COUNTY



# SOCORRO COUNTY POST OFFICES

Post Office	Established	Discontinued	Notes
Montezuma	13 Jan 1896	15 Jan 1900	Mail to Eastview
Moorad	3 Apr 1914	20 Feb 1917	N. ch. to Veguita
Murray	14 Jun 1909	15 Jun 1913	Mail to Oscuro
Oscuro	6 Oct 1881	6 Jun 1882	Mail to Socorro
Otten	11 Mar 1922	15 Apr 1932	Mail to Abeytas
Ozanne	18 Sep 1906	30 Nov 1909	M. to San Antonio
Paraje	24 Sep 1867	30 Jul 1910	Mail to Milligan
Park	22 Apr 1892	4 Jul 1894	Mail to Socorro
Polvadera	2 Apr 1895	Operating	
Polvadero	2 Nov 1881	9 Apr 1883	Mail to Socorro
Puertocito	3 Apr 1903	1 Mar 1930	N. ch. to Field
Rayo	7 Oct 1916	15 Aug 1940	Mail to Scholle
Red Canon	19 Jun 1886	13 Sep 1888	M. to White Oaks
Riley (1)	30 Jan 1892	28 Jul 1898	
	11 Jul 1899	15 Oct 1902	Mail to Magdalena
Riley (2)	6 Jun 1930	28 Feb 1931	Mail to Magdalena
Romiah	29 Aug 1913	3 Apr 1914	N. ch. to Moorad
Rosedale	25 Aug 1899	31 Oct 1928	M. to San Marcial
Sabinal	12 Jun 1866	22 Mar 1871	
	12 Jul 1880	20 Jun 1881	
	28 Apr 1882	27 Nov 1902	
	31 Jan 1905	31 Oct 1907	Mail to Bernardo
San Acacia	17 Nov 1881	Operating	
San Antonio	24 Mar 1870	16 Apr 1873	
	16 Mar 1874	Operating	
San Carlos	26 Feb 1875	2 Oct 1876	
	11 Apr 1877	21 Jan 1878	
San Jose	9 Apr 1892	18 Jun 1896	Mail to Sabinal
San Marcial	31 Dec 1869	2 Oct 1872	
	26 May 1879	31 Mar 1944	M. to San Antonio
Socorro	17 Apr 1851	Operating	
Socorro Mines	24 Sep 1875	16 Apr 1878	N. ch. to Magdalena Mines
Star	30 Jun 1903		Never in operation
Tokay	9 Nov 1917	15 Nov 1932	Mail to Carthage
Veguita	20 Feb 1917	Operating	Was Moorad
Watercanon	9 Jan 1899	30 Sep 1899	Mail to Socorro
Water Canon	9 Mar 1915	1 Jan 1928	N. ch. to Water Canyon
Water Canyon (1)	14 Jun 1887	5 Jul 1888	Mail to Socorro
Water Canyon (2)	1 Jan 1928	30 Nov 1929	Mail to Magdalena

[1] May be an error confusing Sierra and Socorro counties.



